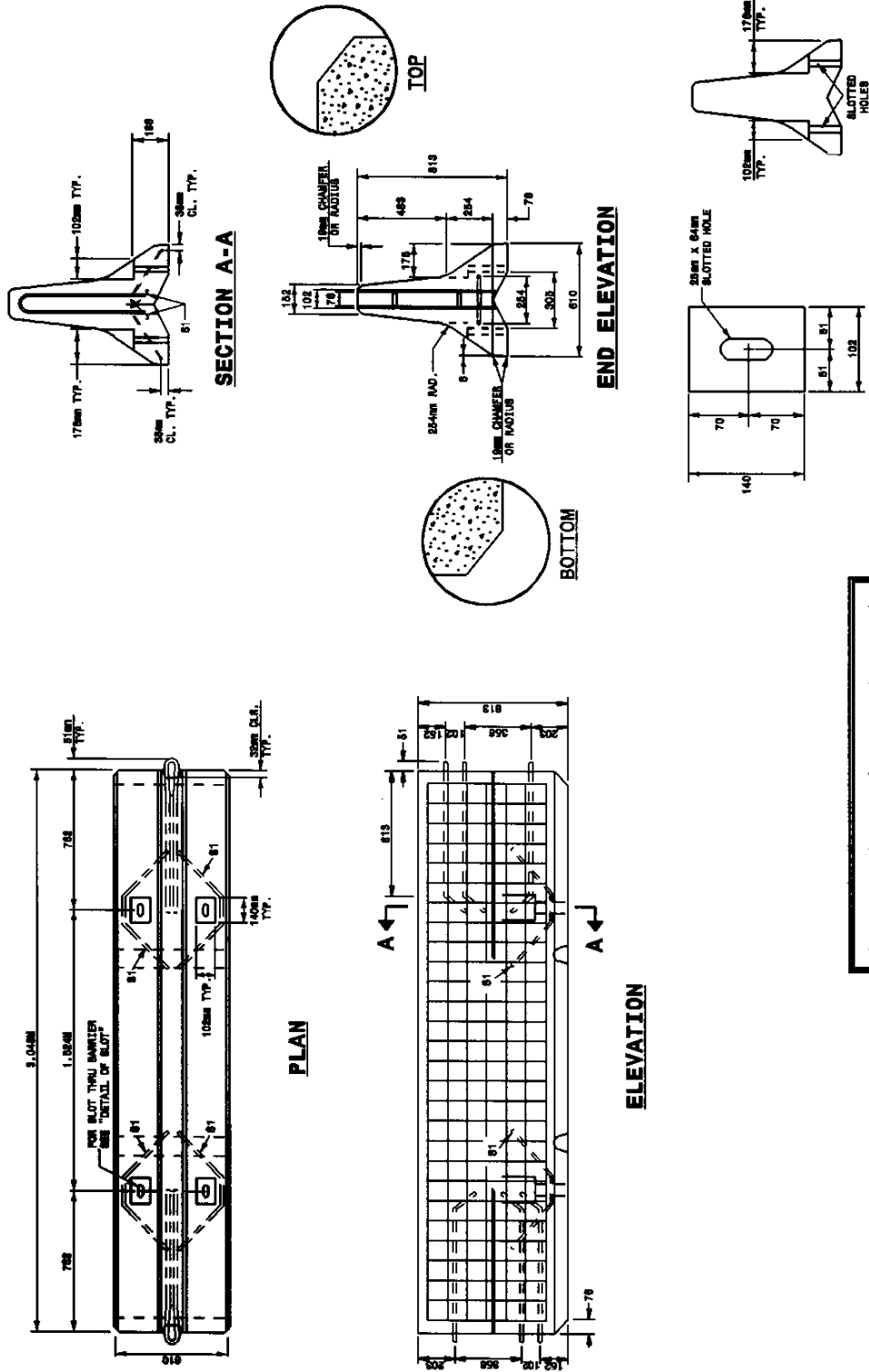


STATE OF
NORTH CAROLINA
DEPT. OF TRANSPORTATION
DIVISION OF HIGHWAYS
RALEIGH, N.C.

METRIC STANDARD DRAWING FOR
PORTABLE CONCRETE BARRIER
ANCHORED

SHEET 2 OF 4
1170.01



DETAIL OF SLOT
AFTER CURING, THE DIAMETER OF THE
SLOT CAN VARY BETWEEN 20mm AND 25mm.

NOTE: REFER TO STD. DWG. 1170.01-SHEET 4 FOR
METHODS OF ANCHORING TEMPORARY BARRIER.

Note:
This drawing is dimensioned in
millimeters unless otherwise
depicted within the drawing.

STATE OF
NORTH CAROLINA
DEPT. OF TRANSPORTATION
DIVISION OF HIGHWAYS
RALEIGH, N.C.

METRIC STANDARD DRAWING FOR
PORTABLE CONCRETE BARRIER
ANCHORED

SHEET 2 OF 4
1170.01