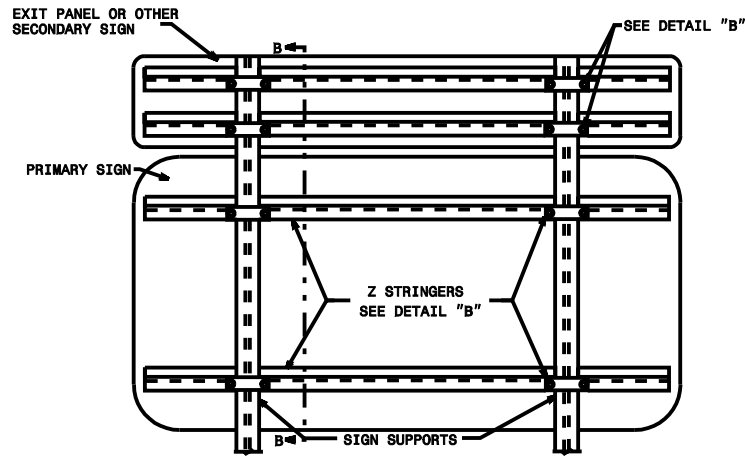
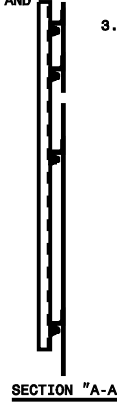


ATTACHMENT METHOD ONE RIGHT (1-R) OR ONE LEFT (1-L)
(EXIT PANEL OR OTHER SECONDARY SIGN ATTACHED TO VERTICAL Z SUPPORTS)



ATTACHMENT METHOD TWO (II)
(EXIT PANEL OR OTHER SECONDARY SIGN ATTACHED TO PRIMARY SIGN SUPPORTS)

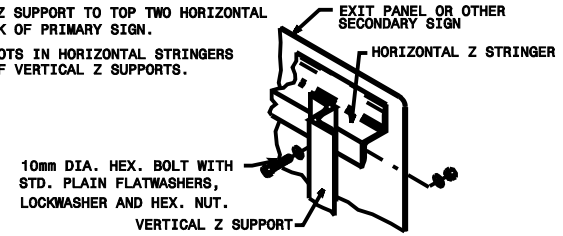
SEE ROADWAY STANDARD 901.70 FOR SIGN STRINGERS AND SUPPORT SPACING



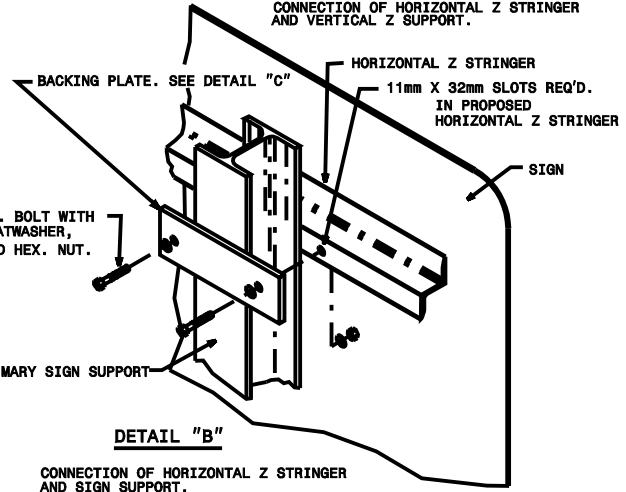
SECTION "B-B"

NOTES:

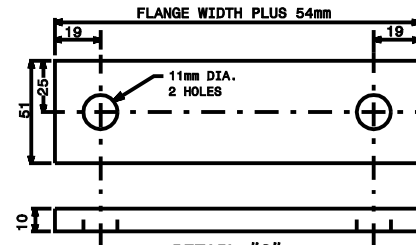
1. FABRICATE VERTICAL AND HORIZONTAL Z'S OF ALUM. Z 76mm X 68mm X 6mm X 3.48 KG/M.
2. ATTACH VERTICAL Z SUPPORT TO TOP TWO HORIZONTAL STRINGERS ON BACK OF PRIMARY SIGN.
3. DO NOT PERMIT SLOTS IN HORIZONTAL STRINGERS FOR ATTACHMENT OF VERTICAL Z SUPPORTS.



DETAIL "A"
CONNECTION OF HORIZONTAL Z STRINGER AND VERTICAL Z SUPPORT.



DETAIL "B"
CONNECTION OF HORIZONTAL Z STRINGER AND SIGN SUPPORT.



DETAIL "C"
BACKING PLATE

Note:
This drawing is dimensioned in millimeters unless otherwise depicted within the drawing.