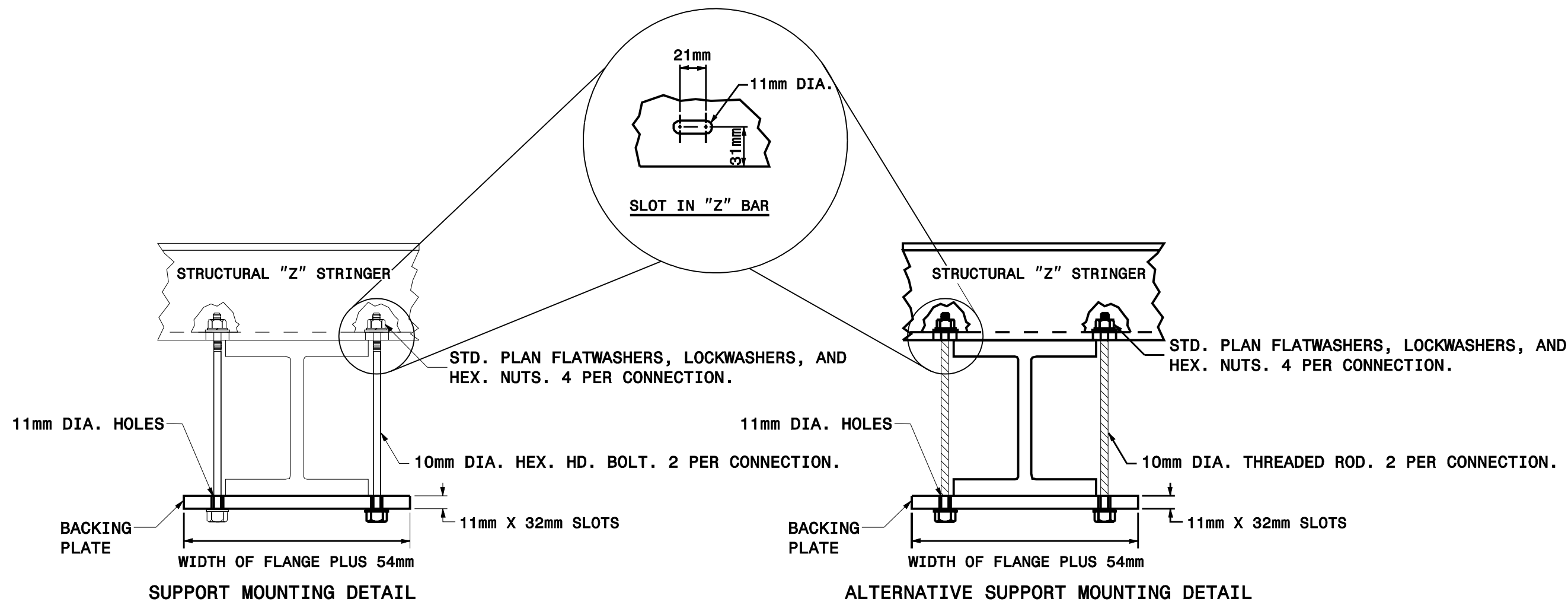
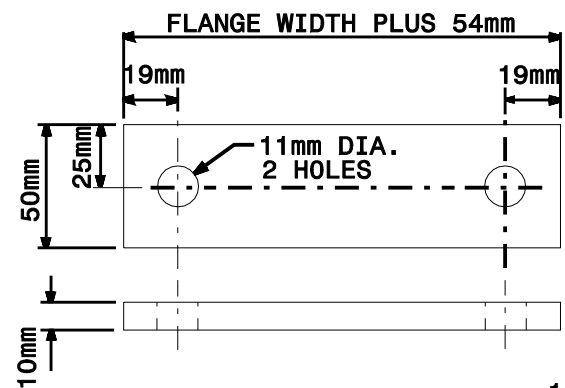


METRIC STANDARD DRAWING FOR
SIGN MOUNTING DETAILS
TYPE A AND TYPE B SIGNS

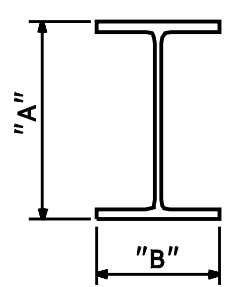
METRIC STANDARD DRAWING FOR
SIGN MOUNTING DETAILS
TYPE A AND TYPE B SIGNS



BACKING PLATE
DETAIL



SIGN SUPPORTS SECTION DIMENSIONS



SECTION	A	B
S75 X 8.5	76.2	60.3
S100 X 11	101.6	66.7
W150 X 13	152.4	101.6
W150 X 18	152.4	101.6
W150 X 24	158.8	101.6
W200 X 27	206.4	133.4
W200 X 31	209.6	133.4
W250 X 33	257.2	146.1
W250 X 39	263.5	146.1
W300 X 39	311.2	165.0
W350 X 45	352.4	171.5
W400 X 31	403.2	139.7
W450 X 52	450.9	152.4
W450 X 60	454.0	152.4
W525 X 65	523.9	165.1

1. THE SUPPORT MOUNTING DETAIL SHOWS A "W" OR "S" BEAM. THIS DETAIL IS ALSO USED FOR MOUNTING SIGNS TO WOOD OR SQUARE TUBE SUPPORTS.
2. USE GALVANIZED STEEL FOR BACKING PLATES AND MOUNTING BOLTS.
3. SEE NCDOT STANDARD SPECIFICATIONS FOR ROADS AND STRUCTURES FOR TYPE OF MATERIAL TO BE USED FOR SIGN HANGER ASSEMBLIES AND SUPPORTS.
4. USE GALVANIZED STEEL FOR MOUNTING BOTS AND THREADED RODS IN COMPLIANCE WITH ASTM A307 AND ASTM A153.

Note:
This drawing is dimensioned in millimeters unless otherwise depicted within the drawing.