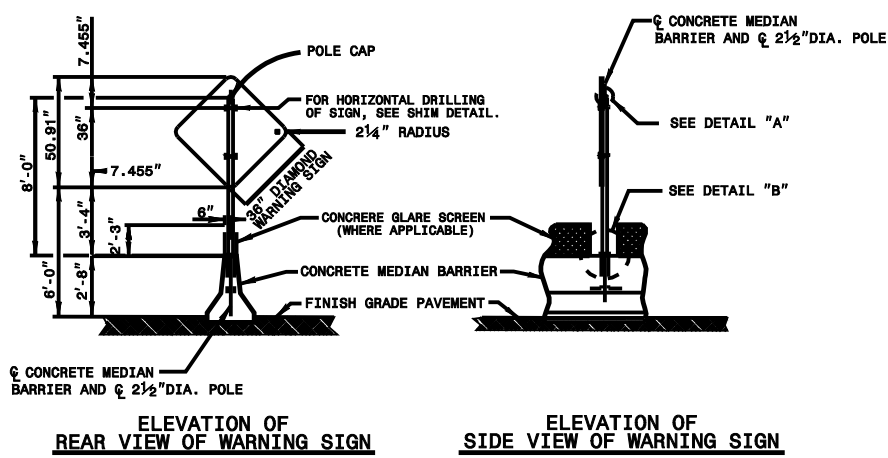
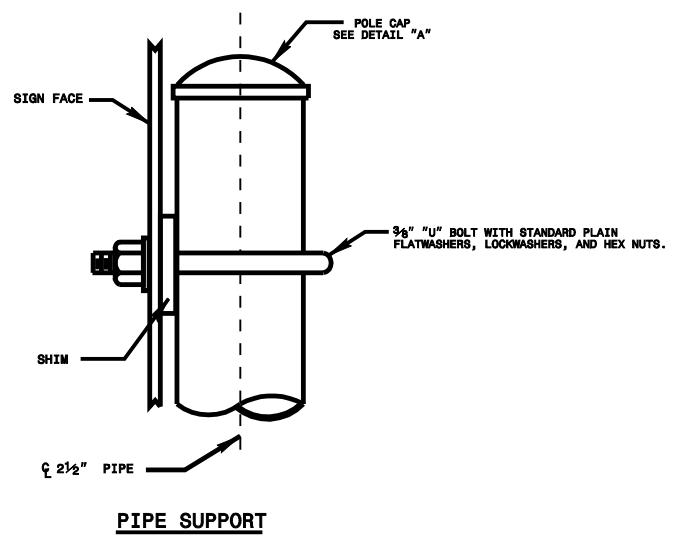


7-07

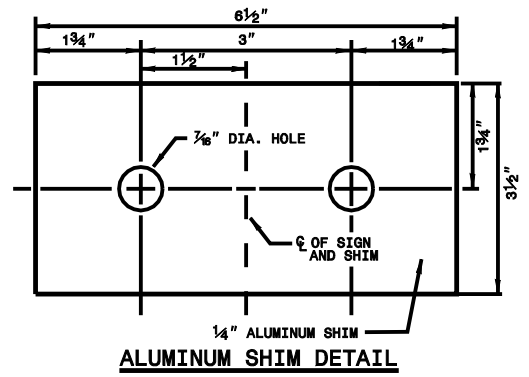


ELEVATION OF
REAR VIEW OF WARNING SIGN

ELEVATION OF
SIDE VIEW OF WARNING SIGN



PIPE SUPPORT



ALUMINUM SHIM DETAIL

NOTES:

1. FURNISH ONE SET OF SIGN SUPPORTS FOR EACH SIGN.
2. SEE NORTH CAROLINA DEPARTMENT OF TRANSPORTATION SIGN SPECIFICATION SUPPLEMENT FOR THE TYPE OF MATERIAL TO BE USED FOR SIGN SUPPORTS.
3. FURNISH ALL MOUNTING HARDWARE.
4. THE NORTH CAROLINA DEPARTMENT OF TRANSPORTATION WILL FURNISH SIGNS.
5. USE ASTM A-36 STEEL GALVANIZED "U" BOLTS AND NUTS IN ACCORDANCE WITH ASTM A-153.
OR
USE 5/8" x 7-5/8" DRILLED ADHESIVE ANCHOR GALVANIZED TO ASTM A-153. EACH ANCHOR SHALL BE PROVIDED WITH TWO (2) NUTS, ONE (1) FLAT WASHER, AND ONE (1) LOCK WASHER.

7-07