

Pedestrian Map
Insets A, B, C, and D



Stanly County
 North Carolina

**Comprehensive
 Transportation Plan**

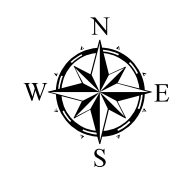
Plan date: May 24, 2011

- On-road**
- Existing
 - Needs Improvement
 - Recommended

- Off-road**
- Existing
 - Needs Improvement
 - Recommended

- Multi-Use Paths**
- Existing
 - Needs Improvement
 - Recommended

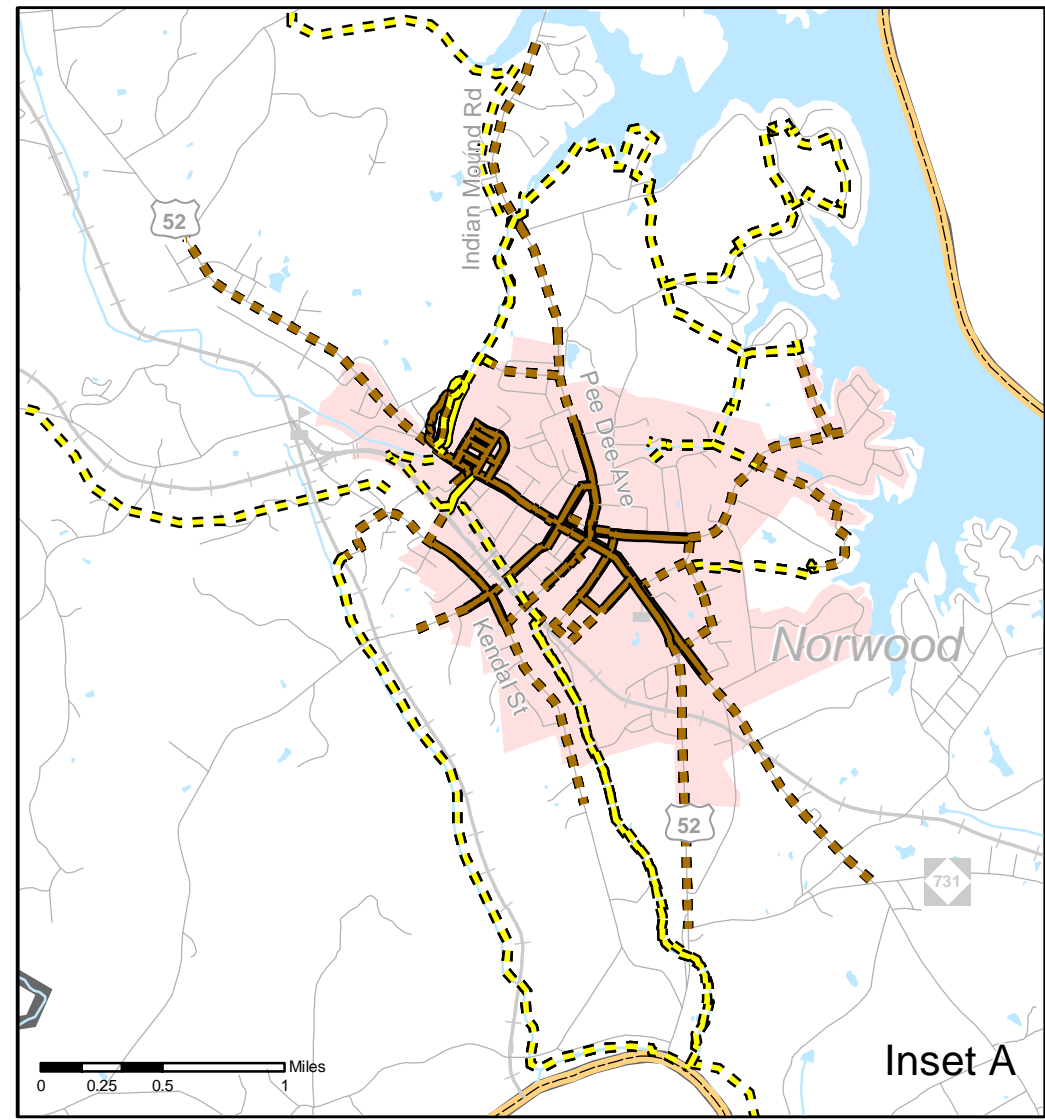
- Existing Grade Separation
- Proposed Grade Separation



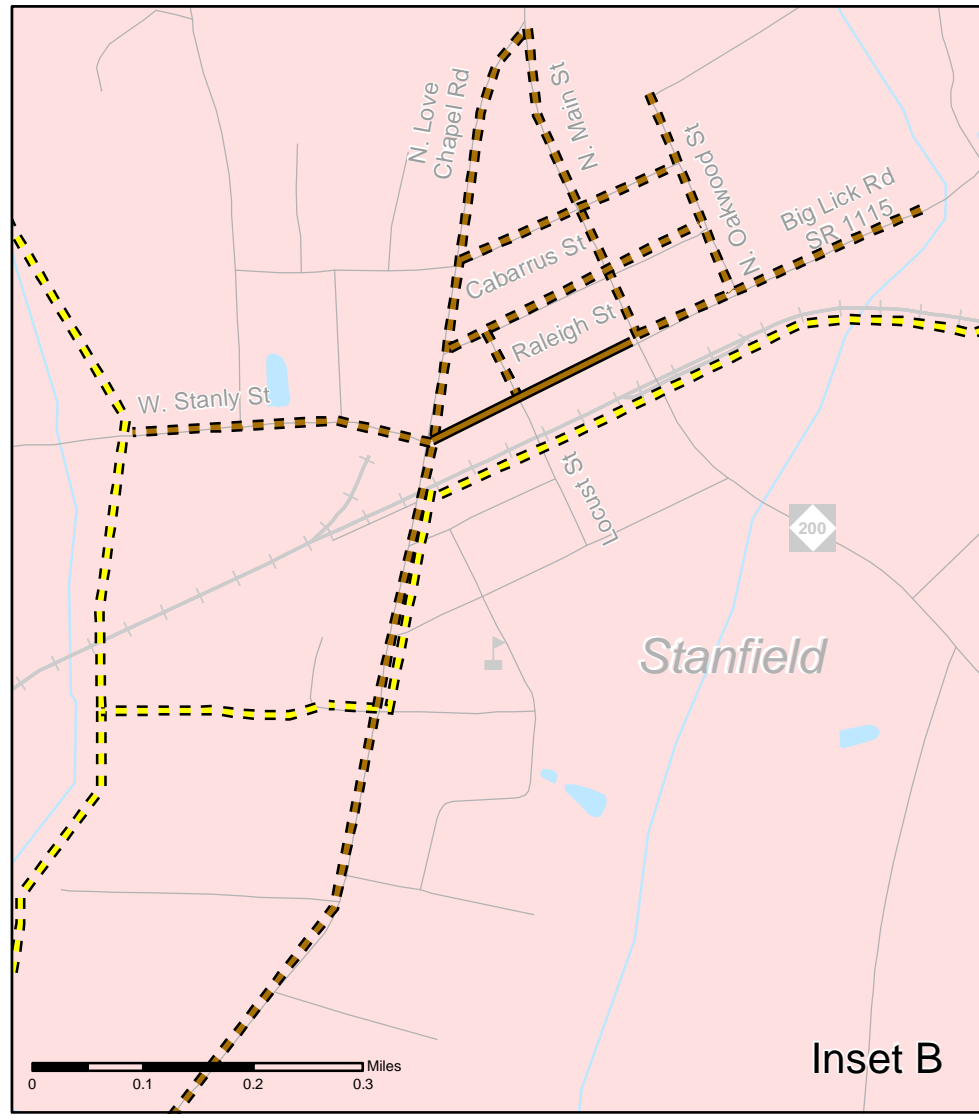
Sheet 5A

Base map date: November 2008

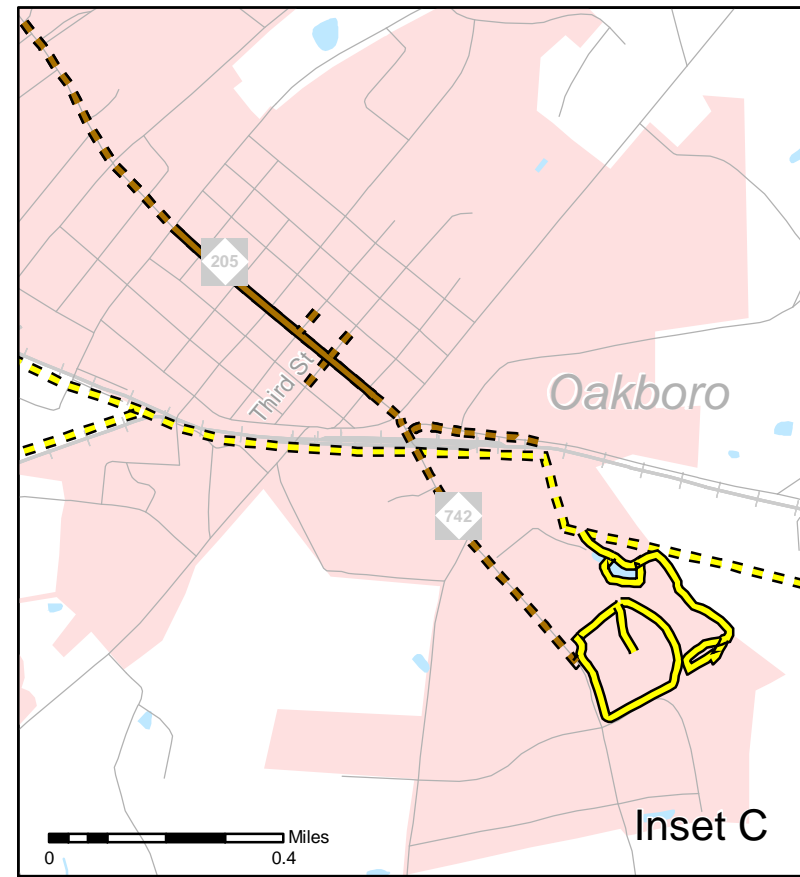
Refer to CTP document for more details



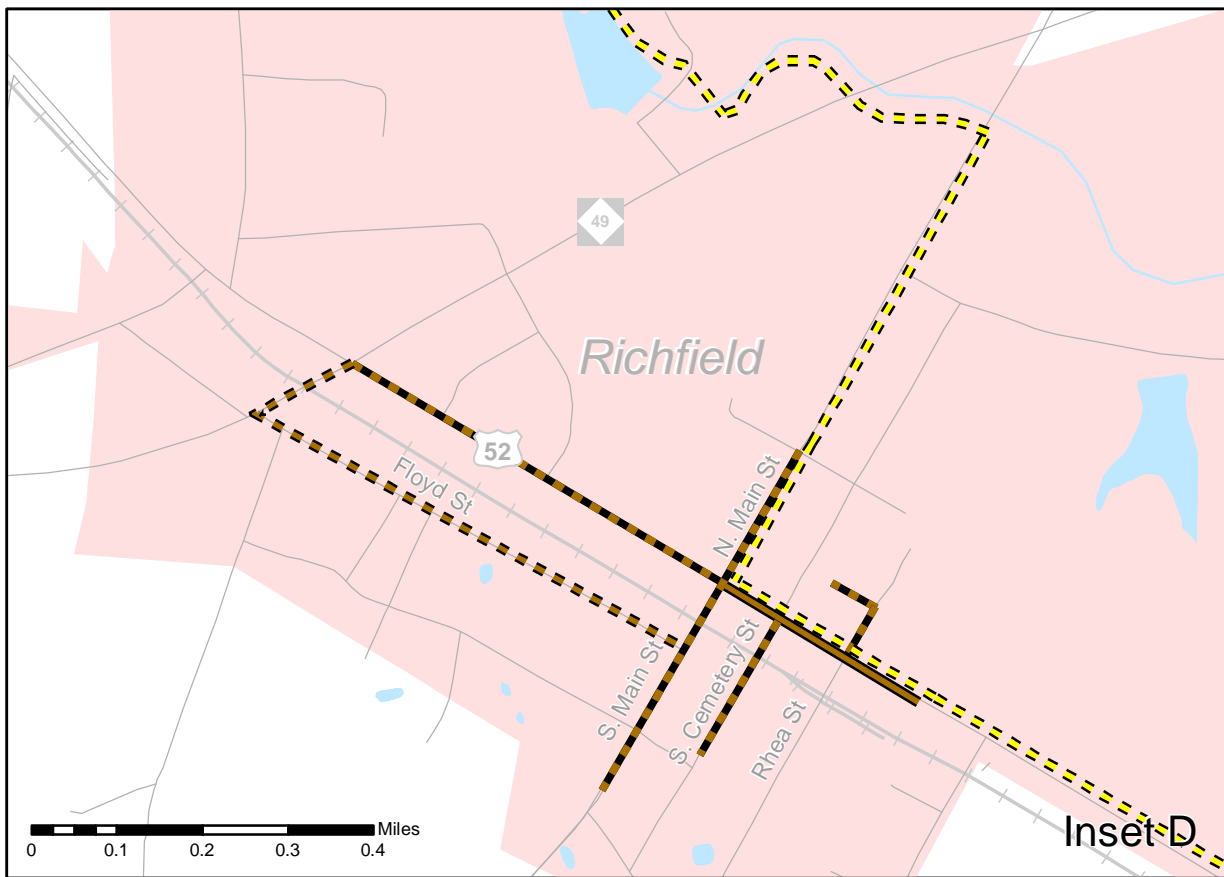
Inset A



Inset B



Inset C



Inset D