

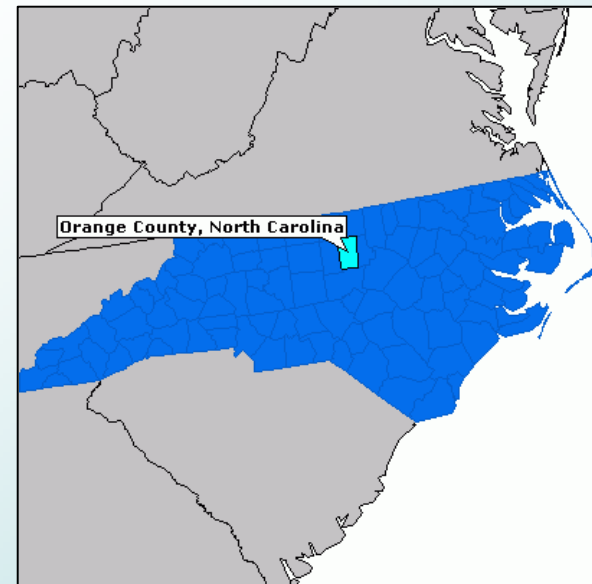
# What is a CTP?

(Comprehensive Transportation Plan)

~Orange County~

# Previous Transportation Planning

- Orange County Thoroughfare Plan – study completed in 1990, but never adopted
- Durham-Chapel Hill-Carrboro MPO is currently working on a study for their area, which includes the municipalities of Chapel Hill and Hillsborough
  - We are coordinating with the DCHC study



# Updated Long Range Planning Process

Thoroughfare  
Plan

The Old Way –  
Highway Intensive



**Comprehensive  
Transportation  
Plan (CTP)**

**The NEW WAY!**

**~Multi-modal~**



# What is a CTP?

(Comprehensive Transportation Plan)



- A **long-range, multi-modal** transportation plan
- Developed cooperatively with NCDOT, the local planning organizations, and representatives from the county and its municipalities
- Incorporates **local interests**, community goals, and **statewide needs** in one common plan
- Adopted/endorsed at 3 levels – local (county/municipalities), regional (MPO/RPO), and state (NCDOT)
  - Board of Transportation mutually adopts the CTP, making it the ultimate plan for guiding future transportation decisions – see GS 136-66.2

# Components of a CTP

- Map set and written report
- Emphasis on multi-modal
  - Highway
  - Public Transportation
  - Rail
  - Bicycle
  - Pedestrian



# Components of a CTP (cont.)

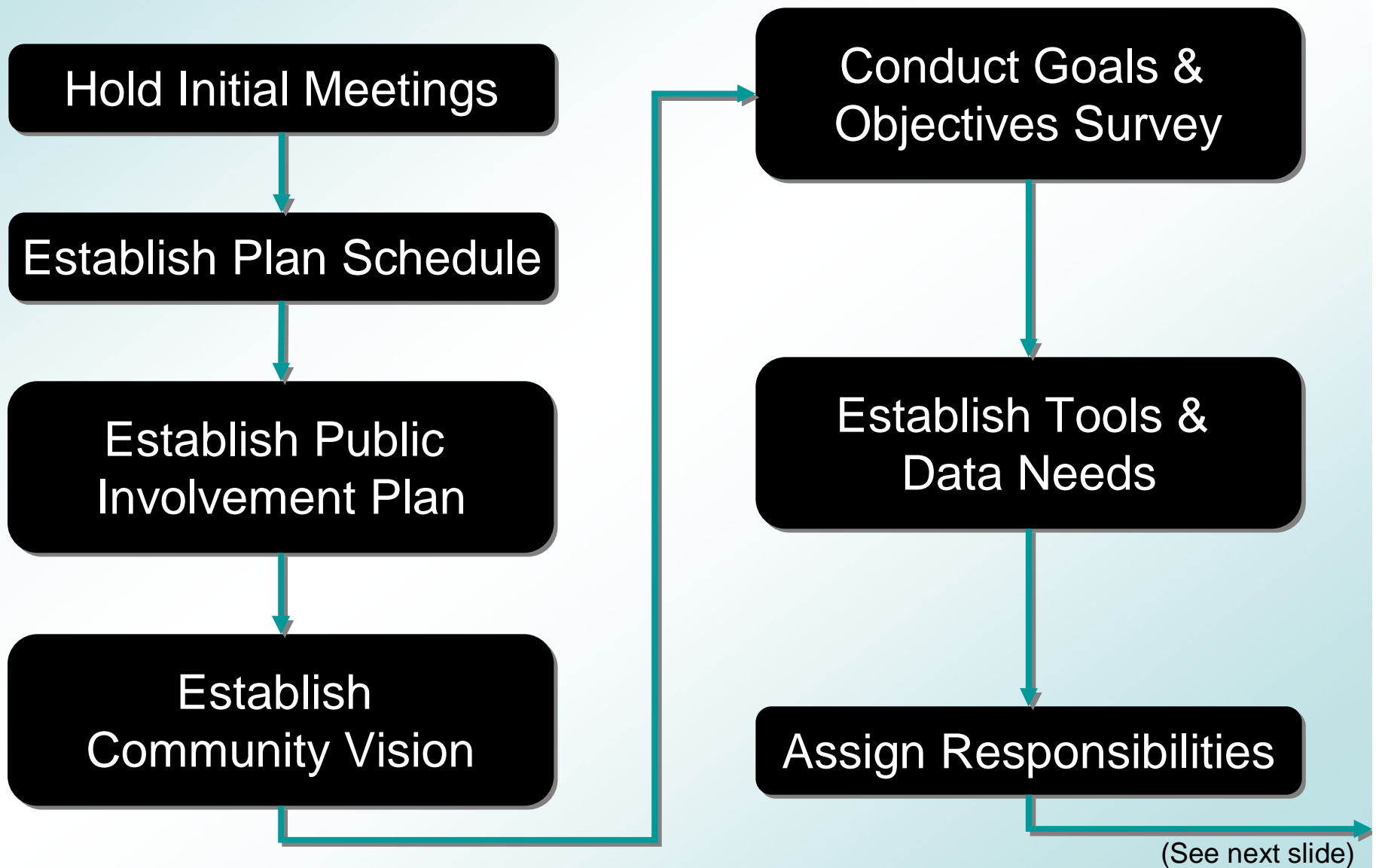
- Recommendations
  - For each mode
  - All roads from the Modeled Roadways network are studied
  - Existing, Needs Improvement, Recommended
  - Highway categories broken down further:
    - Freeways, Expressways, Boulevards, Other Major Thoroughfares, Minor Thoroughfares  
(see end of presentation for detailed examples and information)

# Benefits of a CTP

- Data and projections are in place to **support projects**
- Incorporates **local priorities and input**, community goals, and **statewide goals**
  - County and towns are updated multiple times throughout the process
  - Input from all parties provides the best chance for a plan that can satisfy everybody's goals
- Anticipates and addresses **future traffic** demand
- Well-informed public
- **Corridor protection** for future growth needs

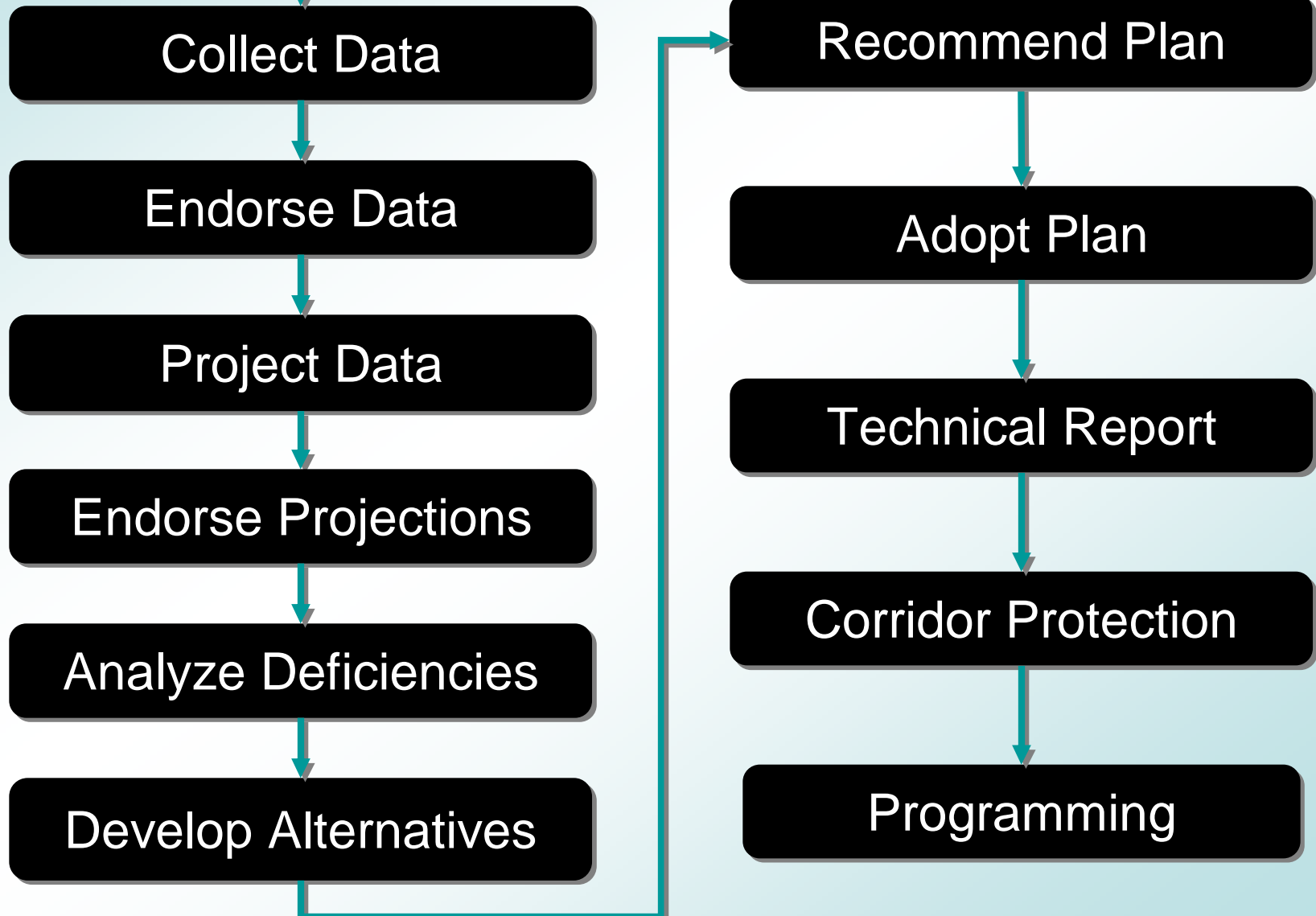


# Transportation Planning Process



# Transportation Planning Process

(Continued from previous slide)



# More Info / Contact Info

## Orange County CTP Website:

<http://www.ncdot.org/doh/preconstruct/tpb/planning/orangecounty.html>

### **Sarah E. Lee**

Transportation Engineer II  
NCDOT TPB  
(919) 733-4705  
[selee@ncdot.gov](mailto:selee@ncdot.gov)

### **Scott Walston**

Triangle Unit Supervisor  
NCDOT TPB  
(919) 733-4705  
[swalston@ncdot.gov](mailto:swalston@ncdot.gov)

### **Karen Lincoln**

Transportation Planner  
Orange County  
(919) 245-2580  
[klincoln@co.orange.nc.us](mailto:klincoln@co.orange.nc.us)

### **Paul Black**

Transportation Planner  
Triangle RPO  
(919) 558-9397  
[pblack@tjcog.org](mailto:pblack@tjcog.org)

### **Andy Henry**

Transportation Planner  
DCHC MPO  
(919) 560-4366  
[andrew.henry@durhamnc.gov](mailto:andrew.henry@durhamnc.gov)

More info at [www.ncdot.org/~tpb](http://www.ncdot.org/~tpb)