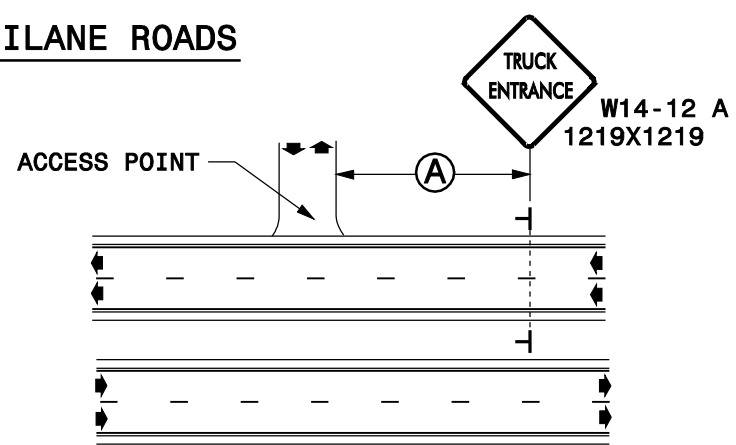


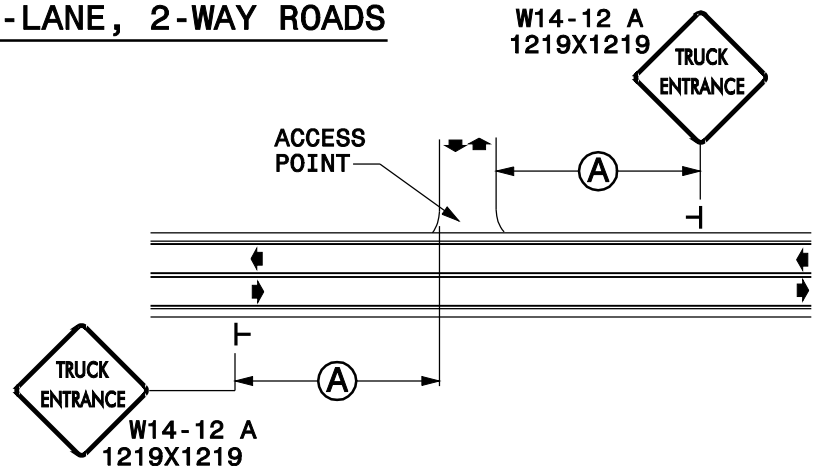
ROADSIDE ACCESS POINT

MULTILANE ROADS



RIGHT LANE CLOSURES MAY BE USED WHEN ALLOWED BY THE ENGINEER.

2-LANE, 2-WAY ROADS



WHEN DIRECTED BY THE ENGINEER, TRAFFIC MAY BE STOPPED TO ALLOW WORK VEHICLE ACCESS. USE THE SAME SIGNING FOR HAUL ROADS AS SHOWN IN THE ADJACENT DETAIL.

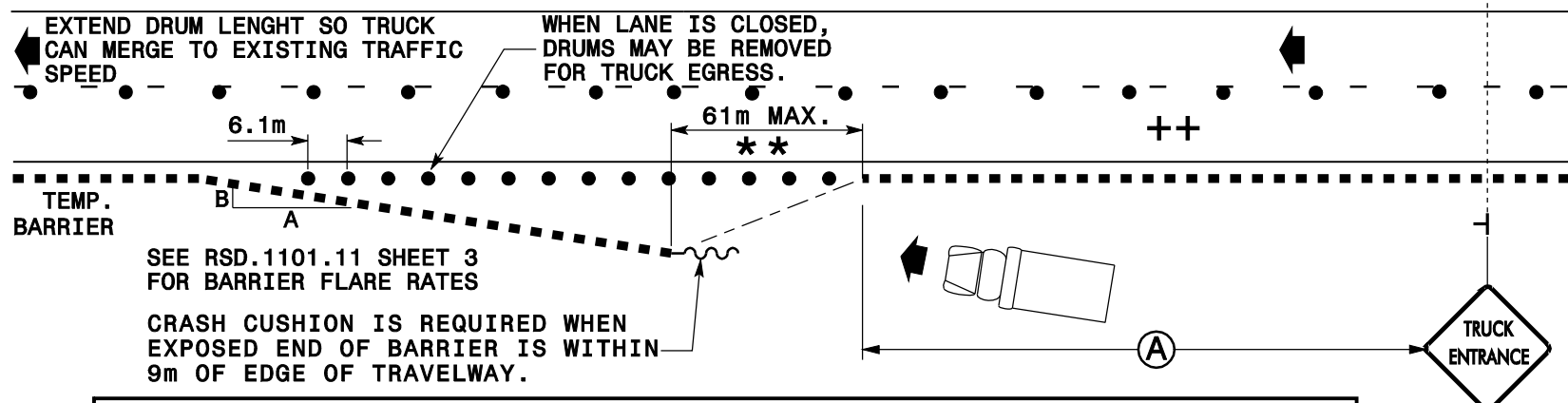
LEGEND

- ■ PORTABLE CONCRETE BARRIER
- ~ TEMPORARY CRASH CUSHION
- DRUM
- ⊥ STATIONARY SIGN
- ⚠ PORTABLE SIGN
- ⬇ FLAGGER
- ➔ DIRECTION OF TRAFFIC FLOW

NOTE:
THIS DRAWING IS DIMENSIONED IN MILLIMETERS UNLESS OTHERWISE DEPICTED WITHIN THE DRAWING.

ACCESS THROUGH TEMPORARY BARRIER

DETAIL SHOWN FOR LEFT SIDE, SAME PRINCIPLE APPLIES FOR RIGHT SIDE ACCESSES



SEE RSD.1101.11 SHEET 3 FOR BARRIER FLARE RATES

CRASH CUSHION IS REQUIRED WHEN EXPOSED END OF BARRIER IS WITHIN 9m OF EDGE OF TRAVELWAY.

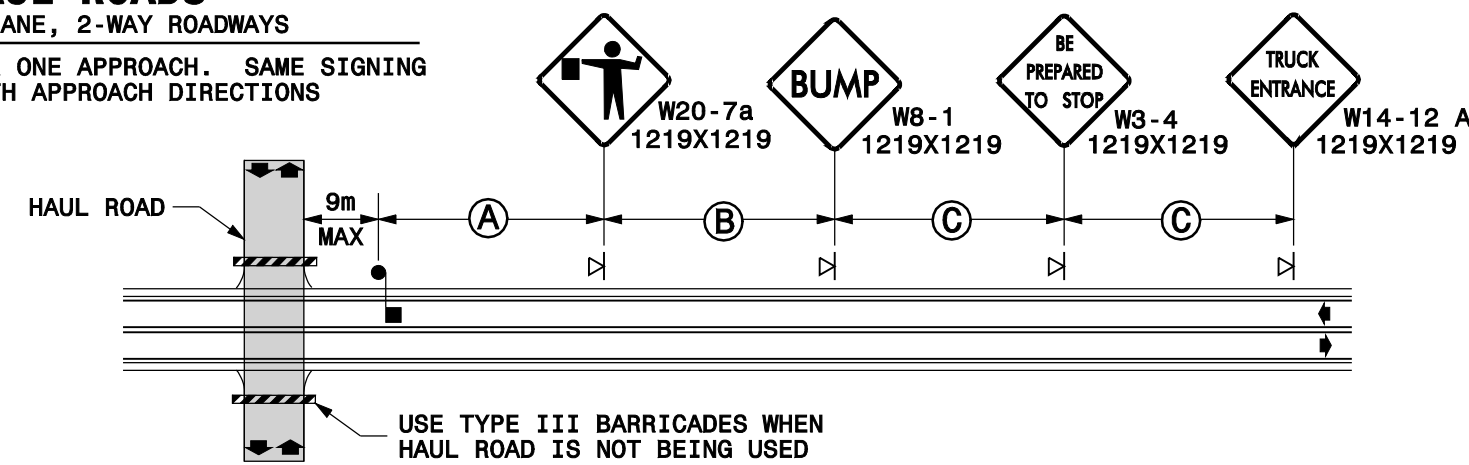
NOTES:

- ** 61m IS A MAXIMUM DIMENSION. KEEP THIS DIMENSION AS SHORT AS POSSIBLE.
- ++ LEFT LANE CLOSURE SHALL BE USED FOR ACCESS, UNLESS AN ENGINEERED ROAD ACCESS IS DESIGNED. SEE STD. 1101.02, SHEET 3.

HAUL ROADS

FOR 2-LANE, 2-WAY ROADWAYS

SIGNS SHOWN FOR ONE APPROACH. SAME SIGNING APPLIES FOR BOTH APPROACH DIRECTIONS



GENERAL NOTES

- 1- MOUNT SIGNS ON BOTH LEFT AND RIGHT SIDES ON DIVIDED ROADWAYS. SIGNS ARE REQUIRED ONLY ON THE RIGHT SIDE OF THE ROADWAY FOR UNDIVIDED ROADWAYS.
- 2- PROVIDE MINIMUM STOPPING SIGHT DISTANCE FOR EACH FLAGGER LOCATION.
- 3- REFER TO STD. 1101.11 SHEETS 2 & 4 FOR STOPPING SIGHT DISTANCE AND SIGN SPACING.
- 4- UPON COMPLETION OF EACH HAULING OPERATION, REPAIR, SWEEP, AND RESTORE THE ROADWAY TO BE SAFELY TRAVERSABLE AT NORMAL OPERATING SPEEDS.
- 5- "BUMP" SIGNS (W8-1) ARE REQUIRED ONLY IF A BUMP OVER THE ROADWAY EXISTS AS A RESULT OF IMPLEMENTING THE HAUL ROAD. USE FLAGGERS AT ALL TIMES TO STOP TRAFFIC WHEN BUMPS ARE LOCATED ACROSS THE ROADWAY. CONSTRUCT BUMPS TO PROVIDE A SMOOTH TRANSITION FOR TRAFFIC CROSSING THEM. REMOVE BUMPS PRIOR TO ALLOWING TRAFFIC TO RESUME NORMAL OPERATING SPEEDS.
- 6- WHEN NOT SPECIFIED IN THE PLANS OR BY THE ENGINEER, PAYMENT FOR CONVENIENCE WILL NOT BE MADE.