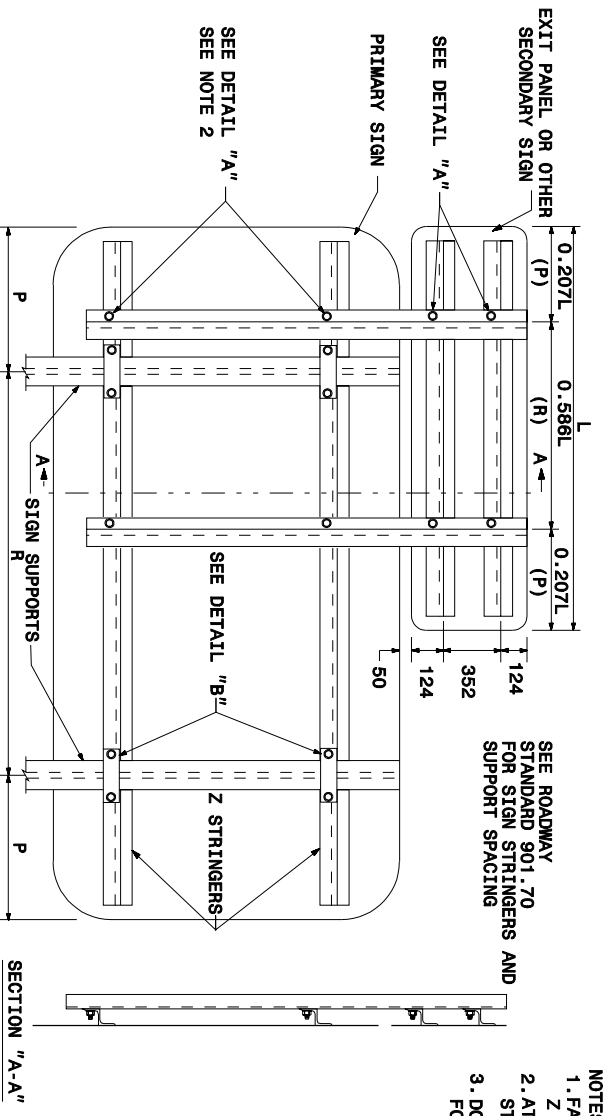
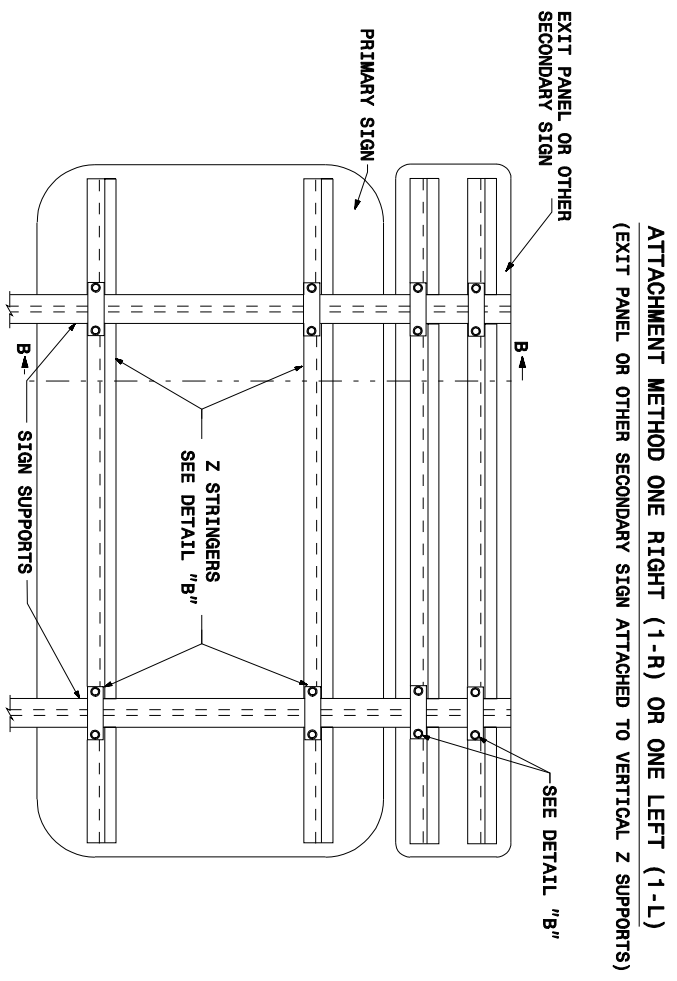


7-06

METRIC STANDARD DRAWING FOR  
**SECONDARY SIGN MOUNTING**

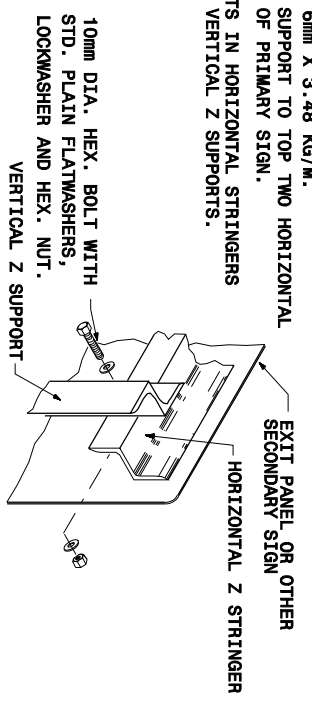


SECTION "A-A"

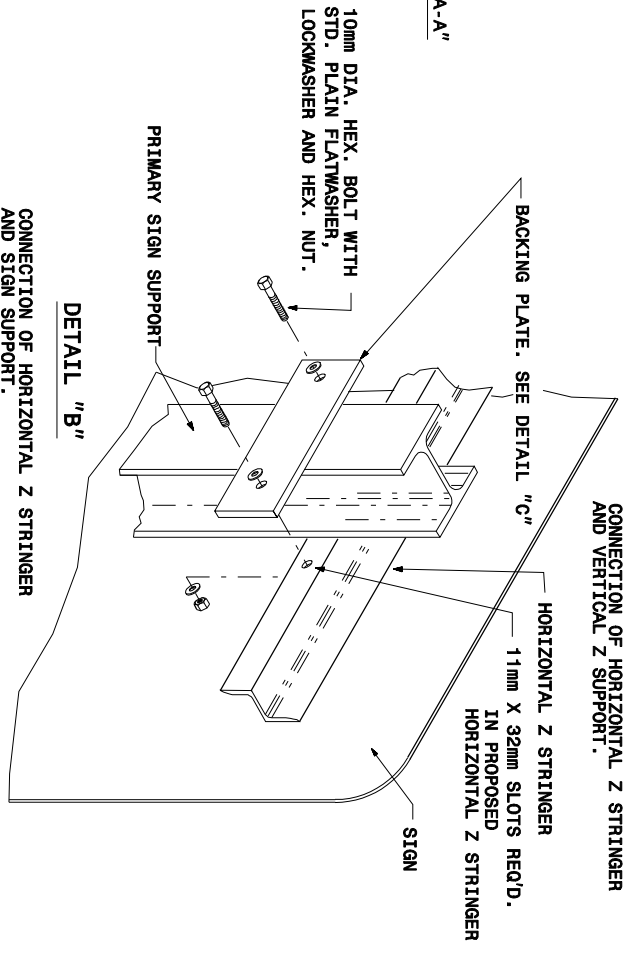


SECTION "B-B"

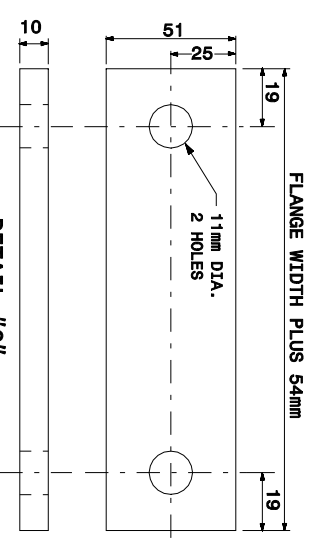
- NOTES:
1. FABRICATE VERTICAL AND HORIZONTAL Z'S OF ALUM.  
Z 76mm X 68mm X 6mm X 3.48 KG/M.
  2. ATTACH VERTICAL Z SUPPORT TO TOP TWO HORIZONTAL STRINGERS ON BACK OF PRIMARY SIGN.
  3. DO NOT PERMIT SLOTS IN HORIZONTAL STRINGERS FOR ATTACHMENT OF VERTICAL Z SUPPORTS.



DETAIL "A"  
CONNECTION OF HORIZONTAL Z STRINGER  
AND VERTICAL Z SUPPORT.



DETAIL "B"  
CONNECTION OF HORIZONTAL Z STRINGER  
AND SIGN SUPPORT.



DETAIL "C"  
BACKING PLATE

Note:  
This drawing is dimensioned in millimeters unless otherwise depicted within the drawing.

ATTACHMENT METHOD TWO (II)  
(EXIT PANEL OR OTHER SECONDARY SIGN ATTACHED TO PRIMARY SIGN SUPPORTS)

METRIC STANDARD DRAWING FOR  
**SECONDARY SIGN MOUNTING**

7-06