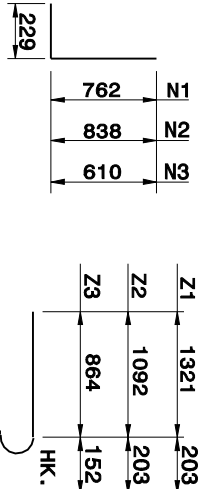


7-06

METRIC STANDARD DRAWING FOR
REINFORCED BRICK ENDWALL
FOR SINGLE 1800mm PIPE - 90° SKEW

838.69



"N" BARS

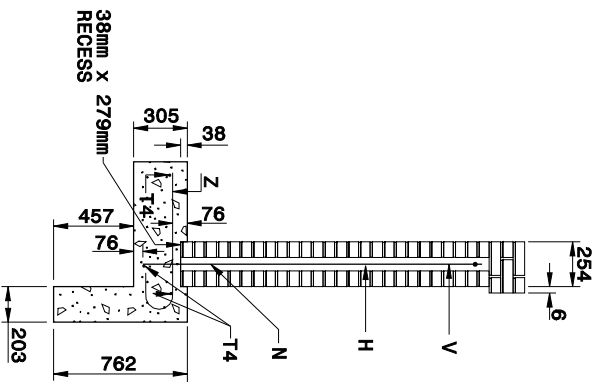
"Z" BARS

"N" & "Z" BAR DIMENSIONS ARE OUT TO OUT.

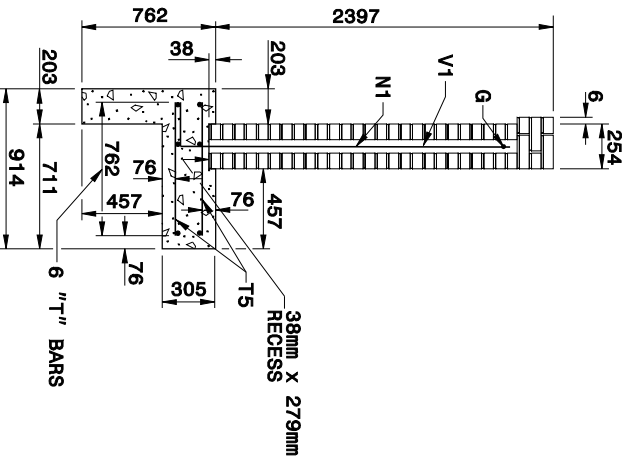
*PAY FOR CONCRETE AS BRICK MASONRY.

BILL OF MATERIAL FOR ENDWALL

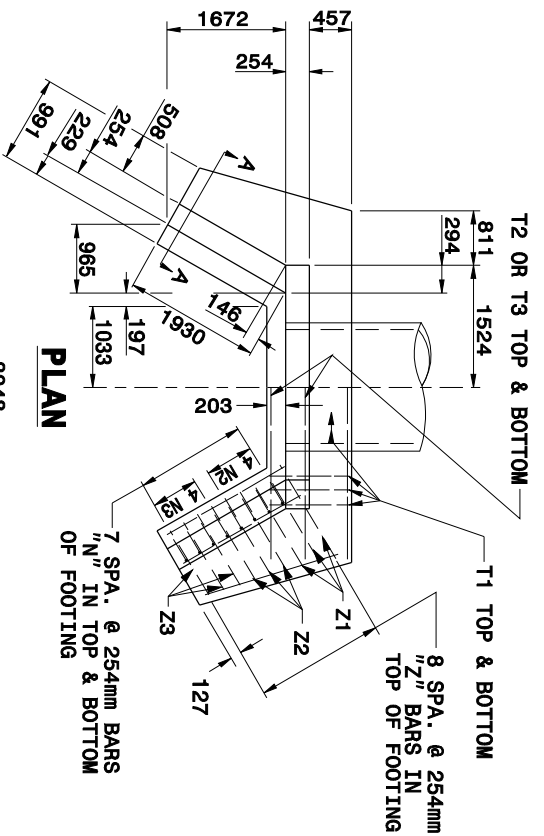
REINF. STEEL	1 PIPE		
BAR SIZE	LENGTH	NO.	WEIGHT
B1 #15	1676	2	5
B2 #15	1295	2	4
G1 #25	2743	2	22
H1 #15	2057	6	19
H2 #15	1727	2	5
H3 #15	1118	2	4
N1 #15	991	6	9
N2 #20	1067	8	20
N3 #15	838	8	11
T1 #15	4470	6	42
T4 #15	1981	6	19
T5 #15	762	38	45
V1 #15	2286	6	22
V2 #15	2007	4	13
V3 #15	1676	4	11
V4 #15	1448	4	9
V5 #15	1041	4	7
Z1 #20	1524	6	22
Z2 #20	1295	6	18
Z3 #15	1016	6	10
REINF. STEEL kg.			317
*CL. "A" CONC. FOOT. M ³			2.9
BR. MASONRY/C.S. M ³			2.8
BR. MASONRY/R.C. M ³			2.5



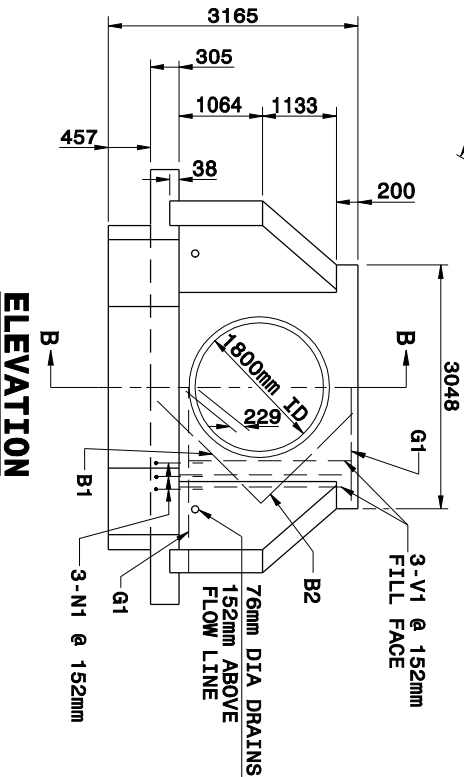
SECTION A-A



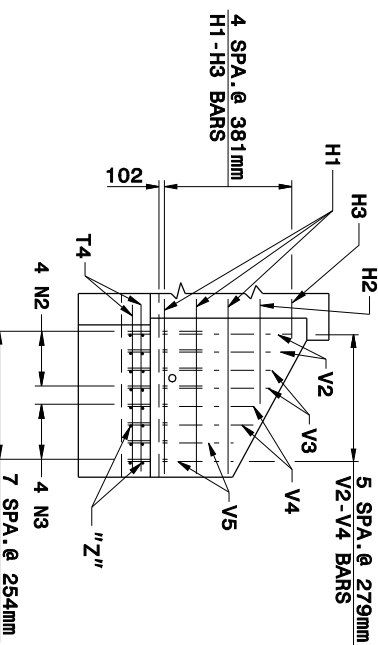
SECTION B-B



PLAN



ELEVATION



WING ELEVATION

SEE STD. DWG. NO. 838.75 FOR GENERAL NOTES.

Note:
This drawing is dimensioned in millimeters unless otherwise depicted within the drawing.

7-06

METRIC STANDARD DRAWING FOR
REINFORCED BRICK ENDWALL
FOR SINGLE 1800mm PIPE - 90° SKEW

838.69