

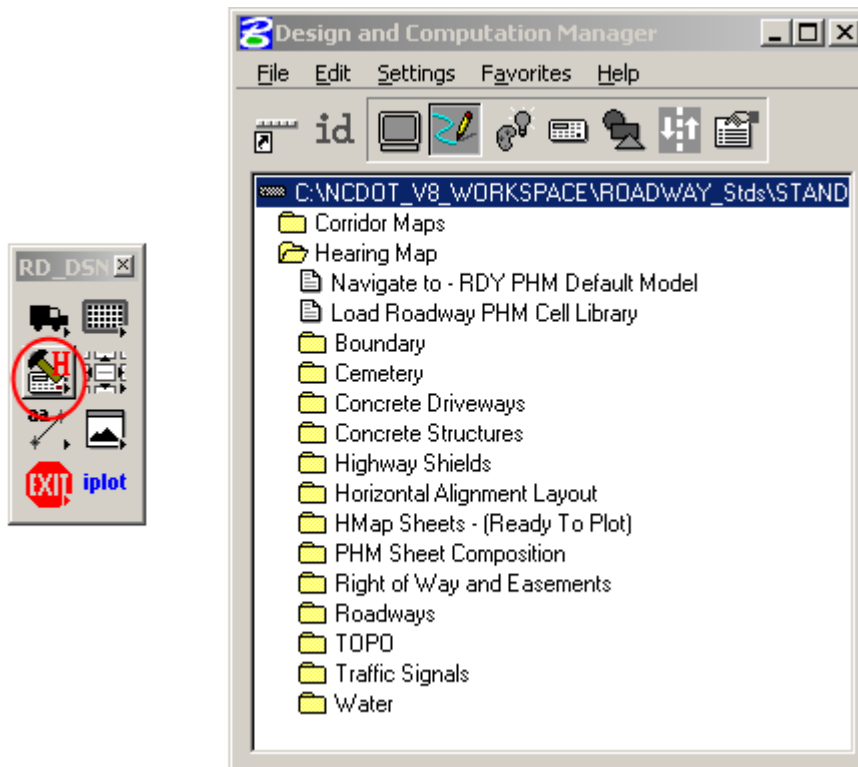
# NCDOT ROADWAY DESIGN PUBLIC HEARING MAP

## CHAPTER 5: HEARING MAP DDB

(Geopak Design and Computation Manager)

### Accessing The Hearing Map DDB

The Roadway Public Hearing Map DDB can be accessed from the RD\_DSN tool frame. Click on the D&C toolbox with the letter “H” for Hearing Maps.

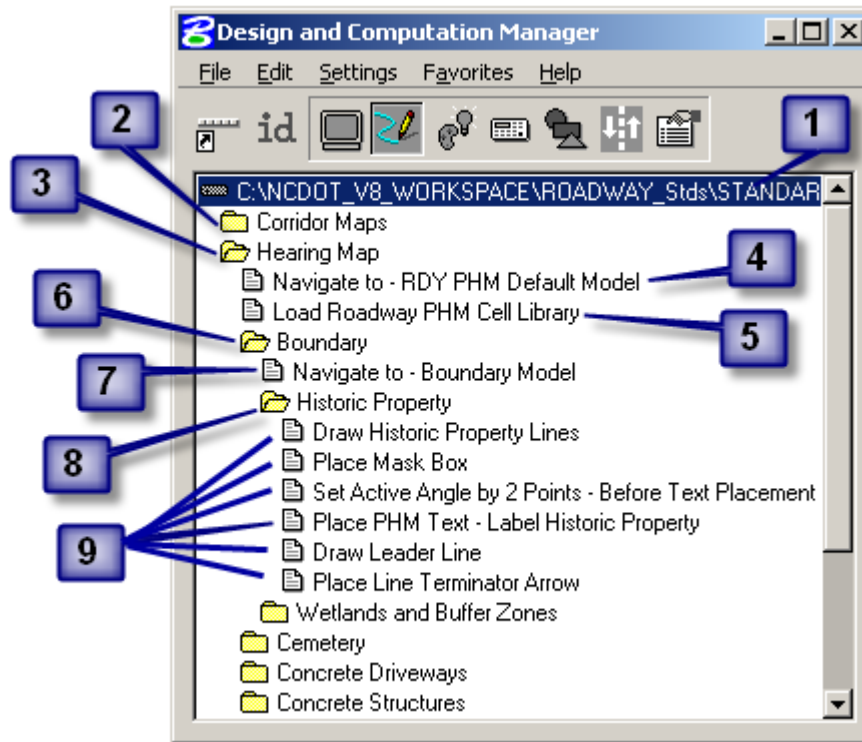


The Hearing Map DDB file is located in the Roadway Standard Workspace.

C:\NCDOT\_V8\_WORKSPACE\ROADWAY\_STDS\Standards\Geopak\ddb\RD\_HearingMap.ddb

# NCDOT ROADWAY DESIGN PUBLIC HEARING MAP

## The Hearing Map DBB Breakdown



1. Location of RD\_HearingMap.DDB
2. Corridor Mapping Preparation folder
3. Public Hearing Map Preparation folder
4. Navigate to RDY PHM Default Model tool item.
5. If necessary, manually load Roadway hearing map cell library. Sometimes hearing map cells do not automatically load up correctly.
6. Folders refer to the model and the hearing map feature.
7. Navigate to the appropriate file model item too.
8. Specific hearing map feature folder.
9. Perform predefined tasks for each specific hearing map feature.