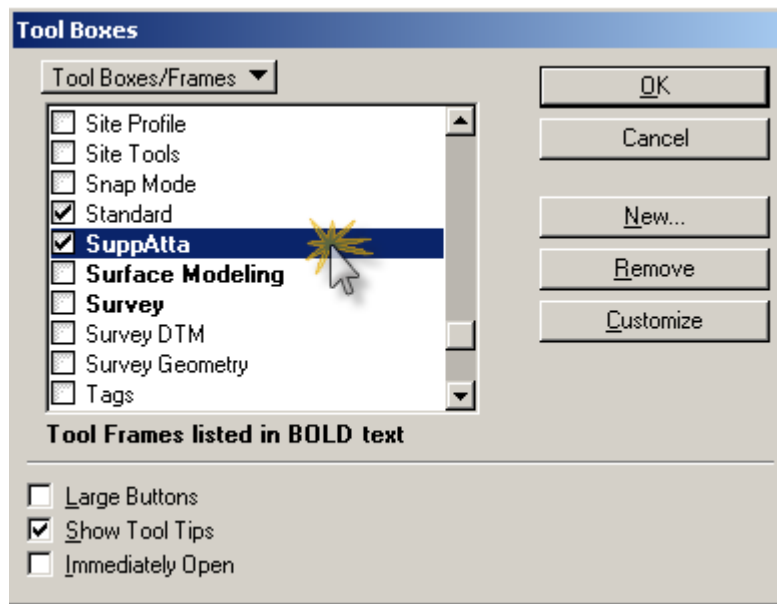


NCDOT ROADWAY DESIGN PUBLIC HEARING MAP

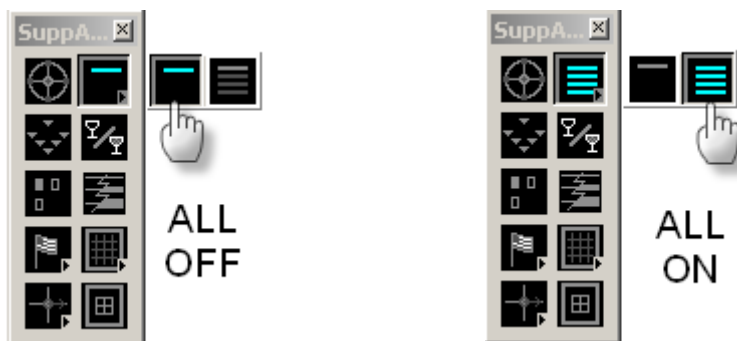
CHAPTER 2: HEARING MAP TOOLS

Supplemental Attachment Tool Frame

SuppAtta Tool Frame



All Reference File Models Display Off/On



NCDOT ROADWAY DESIGN PUBLIC HEARING MAP

Shape Fill Display Toggle



Toggle button to display/not display fill areas.

Line Weight Display Toggle



Toggle button to relative element weigh or all element weight is displayed as 0.

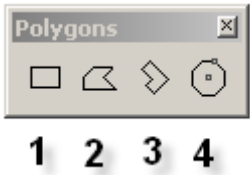
DP In Same Location



Can be used with or without a fence. Mostly used to copy an element or a fence area from a file model to the active file model. Place a fence. Data Point on the screen to accept the fence area to copy. Click on DP in Same Location button to copy to same location. Same as key in "DL=0,0".

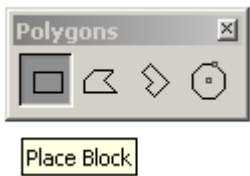
NCDOT ROADWAY DESIGN PUBLIC HEARING MAP

Create Shape with Polygons

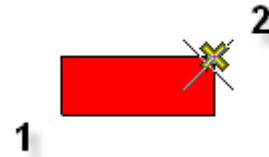
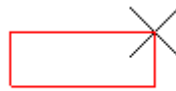
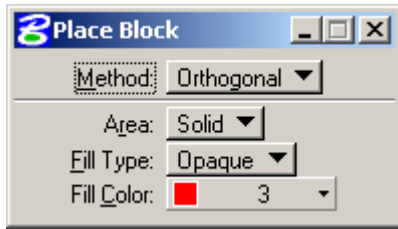


1. Place Block *
2. Place Shape
3. Place Orthogonal Shape
4. Place Regular Polygon

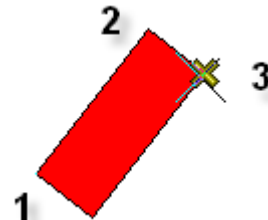
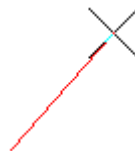
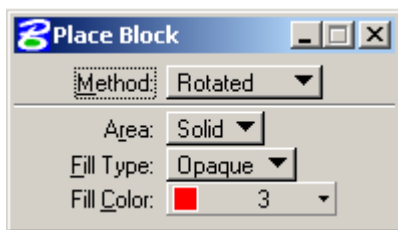
* When using the **Place Block** command, the two methods are **Orthogonal** and **Rotated**.



Orthogonal



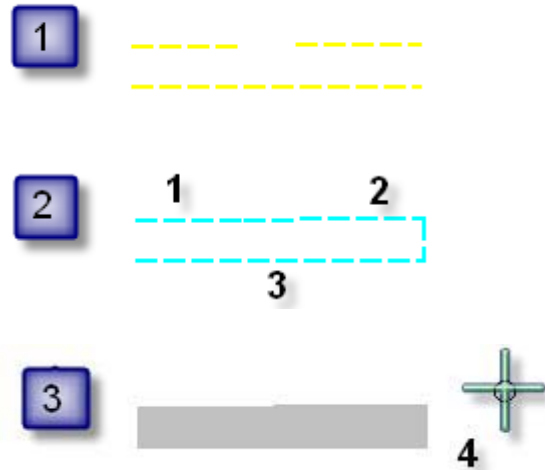
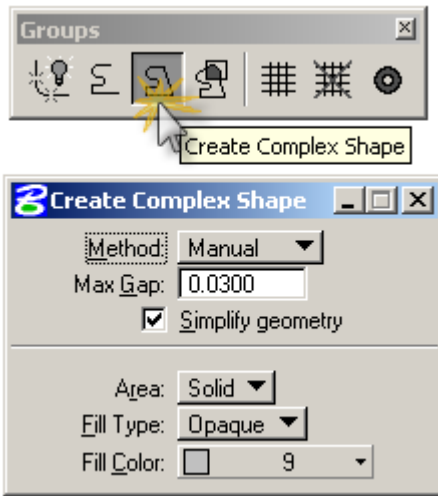
Rotated



NCDOT ROADWAY DESIGN PUBLIC HEARING MAP

Create Complex Shape

(Manual Method)



STEP:

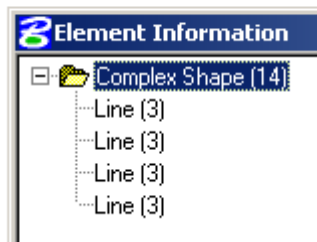
1. Evaluate the direction of outlining elements before creating the shape.
2. DP (1-3) on the outlining elements in the order determined. Note the gap between DP element 1 and 2 is automatically bridged with a line element.
3. DP (4) on the screen once to accept and right click on the mouse to complete the shape creation.

Note that outlining elements has to be in the active file model for this tool to work. The shape can not be created if the bounding elements are referenced. One of the advantages of this tool is that if a gap exists between two elements, then this tool will automatically bridge the gap with a line.

Simplify Geometry

This option determines if the shape created is be a Simple (Type 6) or Complex (Type 14) Shape. There is no advantage to selection one over the other. However, Roadway CADD Support for plotting purposes prefers having Simplify Geometry checked.

WITHOUT SIMPLIFIED GEOMETRY (UNCHECKED)



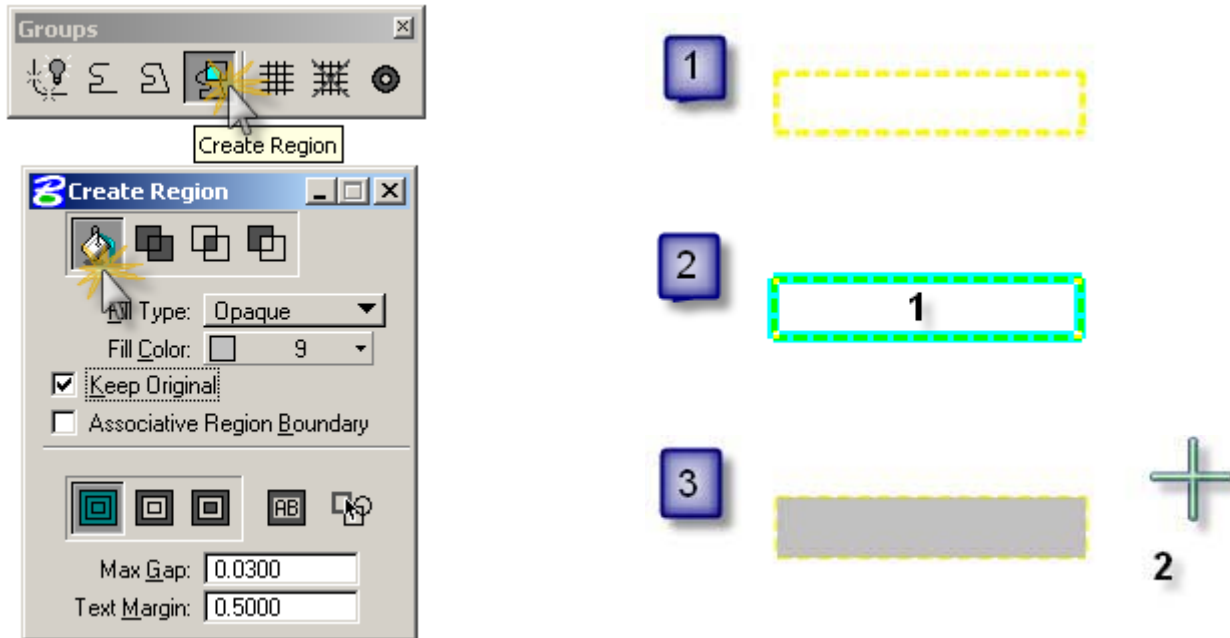
WITH SIMPLIFY GEOMETRY (CHECKED)



NCDOT ROADWAY DESIGN PUBLIC HEARING MAP

Create Region

(Flood Area)



STEP:

1. Make sure all outlined boundaries are closed before creating the shape.
2. DP (1) anywhere inside the desired region to be “flooded”.
3. DP (2) on the screen once to accept and right click on the mouse to complete the shape creation.

Note if the Geopak D&C Manager RD_HearingMap.DDB is used to create shapes, by default the create region command is invoked. In contrary to the Create Complex Shape command, the outlining elements can be referenced or in the active file in order to create the shapes.

Keep Original

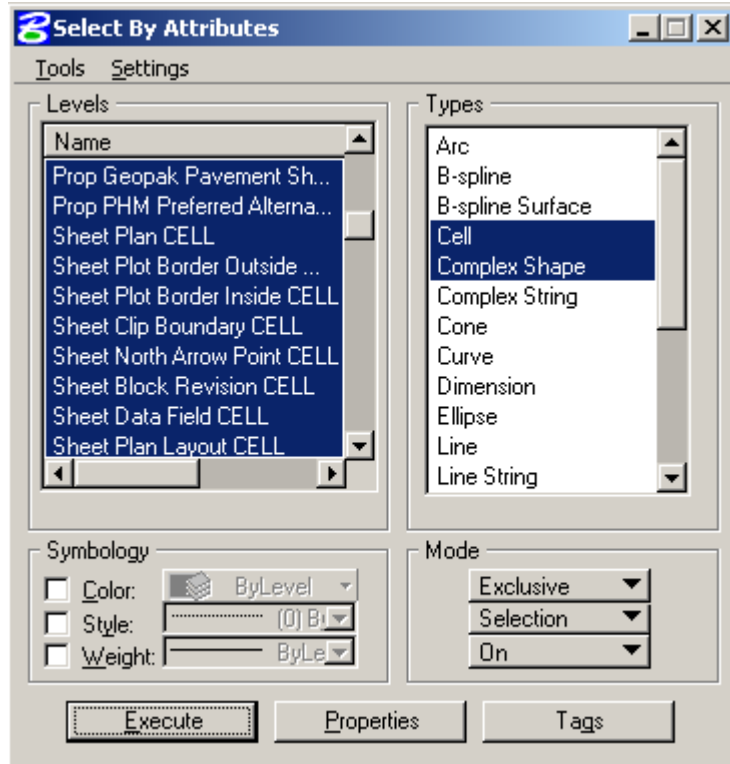
This option determines if the outlined elements used to create the shape are to be deleted after the shape has been created. Roadway CADD Support prefers having Keep Original checked initially. Once all the shapes have been created for the appropriate file model, then these outlined can be deleted. Use the select By Attributes tool to delete all elements except shape and complex shape elements for this.

NCDOT ROADWAY DESIGN PUBLIC HEARING MAP

Select by Attributes

The Select by Attributes dialog box is used to select certain found in the active file model base on certain criteria. The following is from the Microstation Help file.

1. From the Edit menu, choose **Select By Attributes**. The Select By Attributes dialog box opens. The second option menu in the Mode section should be set to Selection.



2. (Optional) Use the controls in the dialog box to specify selection criteria. (To specify criteria based on element properties, click the Properties button and use the controls in the Select by Properties dialog box. To specify criteria based on tag values, click the Tags button and use the controls in the Select By Tags dialog box.)
3. In the Mode section, make sure On is chosen from the third option menu.
4. Click Execute. The elements meeting the specified selection criteria are highlighted.

The above procedure can be adapted for locating (highlighting) elements or filtering their display based on their attributes. The effect of the Execute button in the Select By Attributes dialog box is controlled with the second option menu in the Mode section, which is set to Selection by default. The other options are Location and Display.

Sometime it is desired to deselect certain elements or select all elements except for what meet the criteria. To accomplish this, change the **Inclusive** option to **Exclusive** option under the Mode setting.