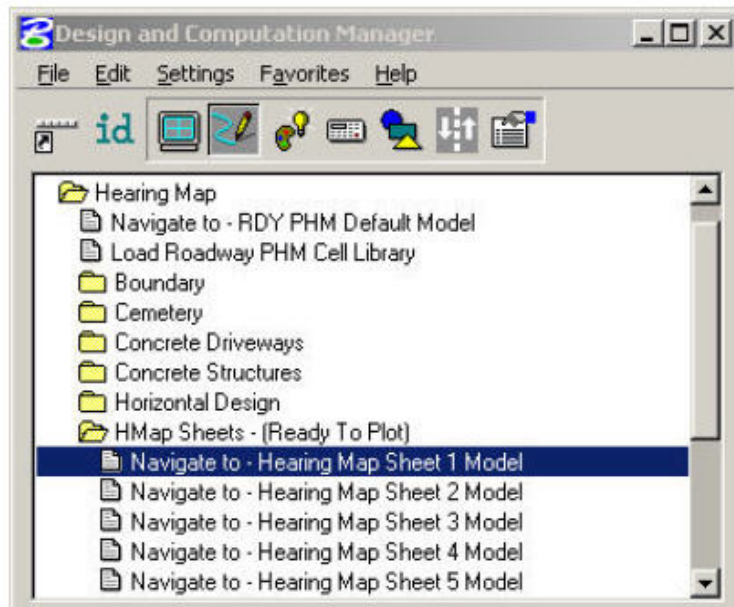
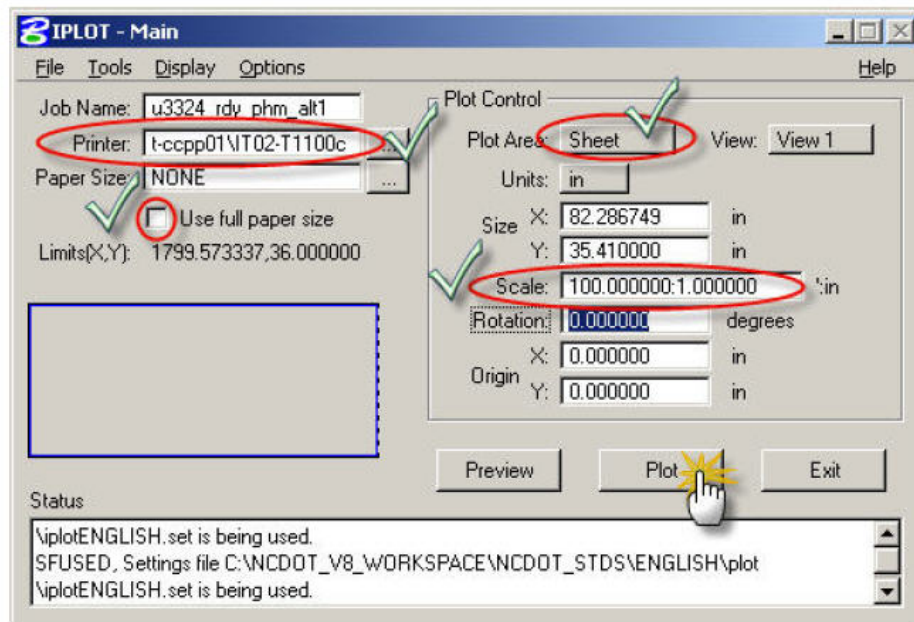


# Plotting a Hearing Map



# Plotting a Hearing Map



**Step 3. Prepare Iplot settings to send the Plot**

**Step 3a. Set the correct Printer**

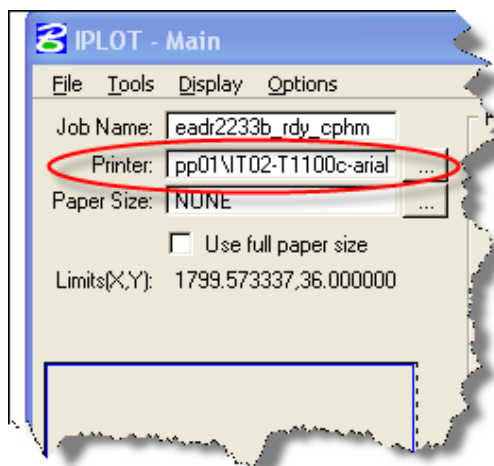
**Step 3b. Verify the Use Full Size Paper setting is unchecked**

**Step 3c. Note to see Plot Area is set to "SHEET"**

**Step 3d. Verify your Scale is correct**

**Step 3e. Send your plot**

**Note: Setting the Plot Area to "Sheet" Step(3-C) will only work if you follow the Roadway HMAP Training Manual Chapter 10 sheets (10-1 thru 10-4) otherwise you must leave it set to "Fence".**



**Note: Use this printer when plotting a Hearing Map with an aerial photograph**