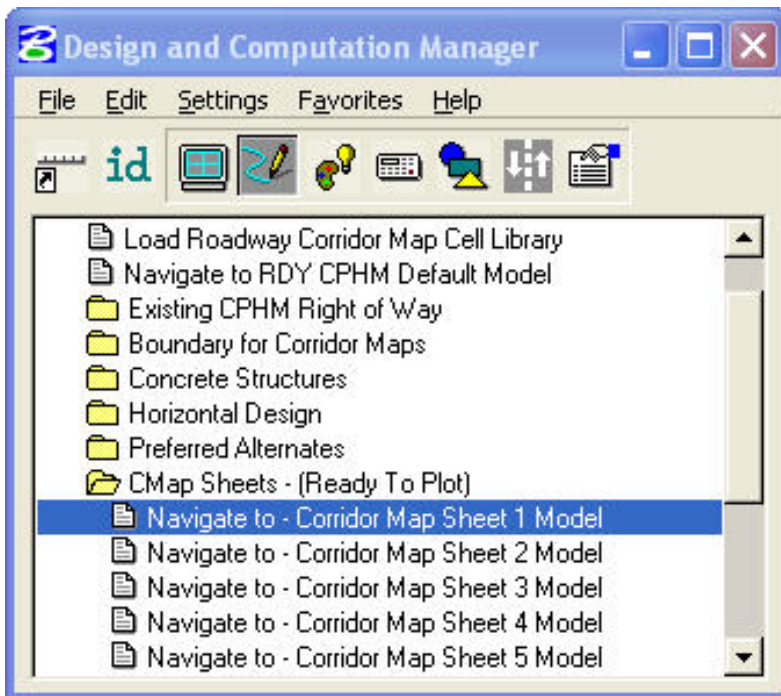
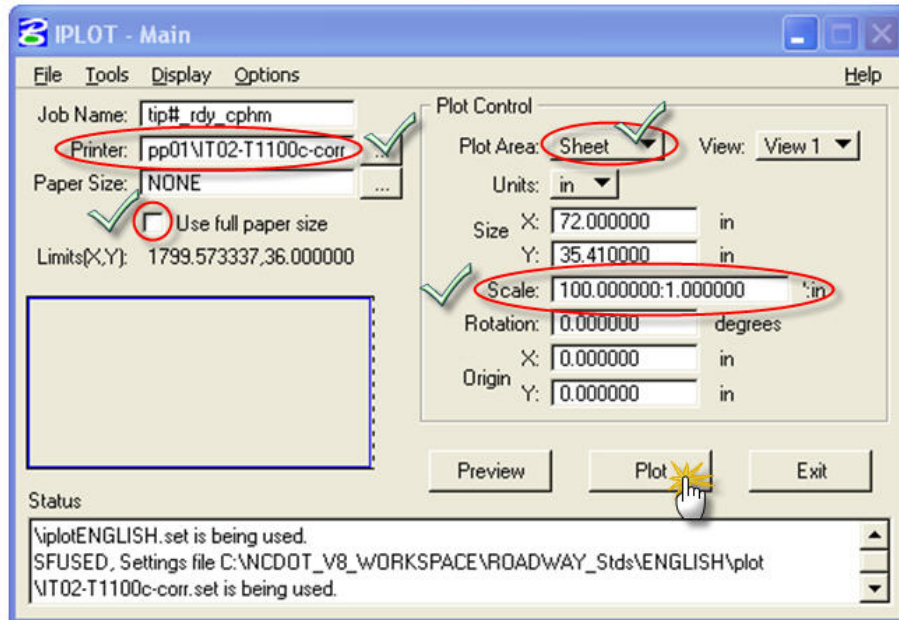


Plotting a Corridor Map

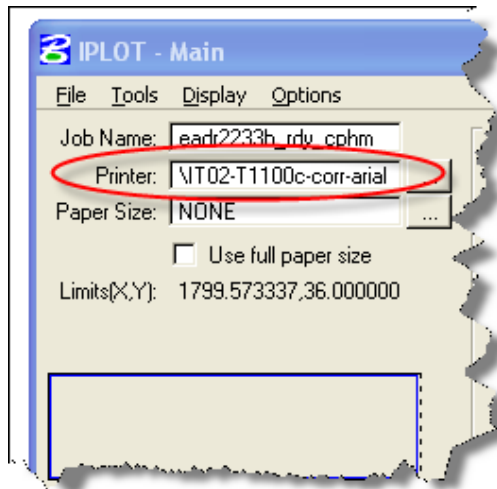


Plotting a Corridor Map



- Step 3. Prepare Iplot settings to send the Plot
- Step 3a. Set the correct Printer
- Step 3b. Verify the Use Full Size Paper setting is unchecked
- Step 3c. Note to see Plot Area is set to "SHEET"
- Step 3d. Verify your Scale is correct
- Step 3e. Send your plot

Note: Setting the Plot Area to "Sheet" Step(3-C) will only work if you follow the Roadway HMAP Training Manual Chapter 10 sheets (10-1 thru 10-4) otherwise you must leave it set to "Fence".



Note: Use this printer when plotting a Corridor Map with an aerial photograph