

How to Set Up the NCDOT Workspace

And still survive in a multi client
environment

The NCDOT Workspace

- Standard Setup
 - System environment variables
 - Update Workspace program
 - MS_Start
- Consultant Setup
 - Variables for Update Workspace
 - Desktop Shortcuts
 - Customized mslocal.cfg
 - Update Workspace program
- Supplemental Workspace

The Standard NCDOT Workspace

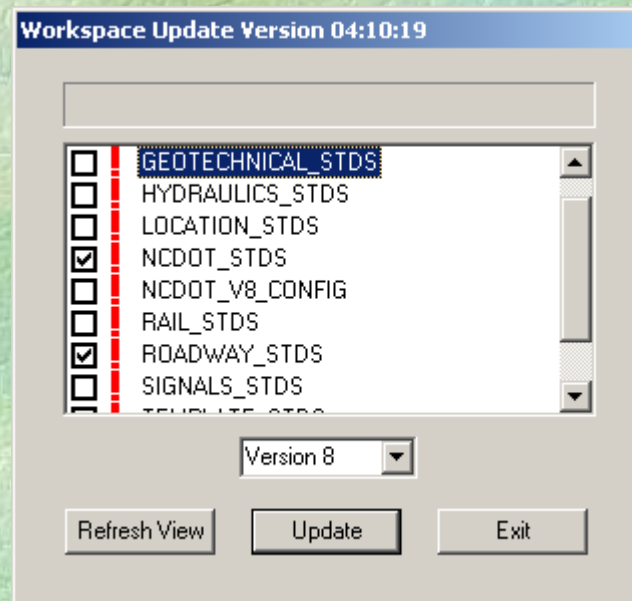
■ System variables

- `MS_CONFIG=(drive):\ncdot_v8_config\ncdot_mslocal.cfg`
- `NCDOT_MSJ_CONFIG_DIR=(drive):\NCDOT_MSJ_CONFIG`
- `NCDOT_MSJ_WORKSPACE_DIR=(drive):\NCDOT_MSJ_WORKSPACE`
- `NCDOT_V8_CONFIG_DIR=(drive):\NCDOT_V8_CONFIG`
- `NCDOT_V8_WORKSPACE_DIR=(drive):\NCDOT_V8_WORKSPACE`

- Can be run locally or from a server
 - ex. `MS_CONFIG = c:\ncdot_v8_config\ncdot_mslocal.cfg`
- Can also use UNC for drive
 - ex. `MS_CONFIG = \\trf-4467\workspace\ncdot_v8_config\ncdot_mslocal.cfg`

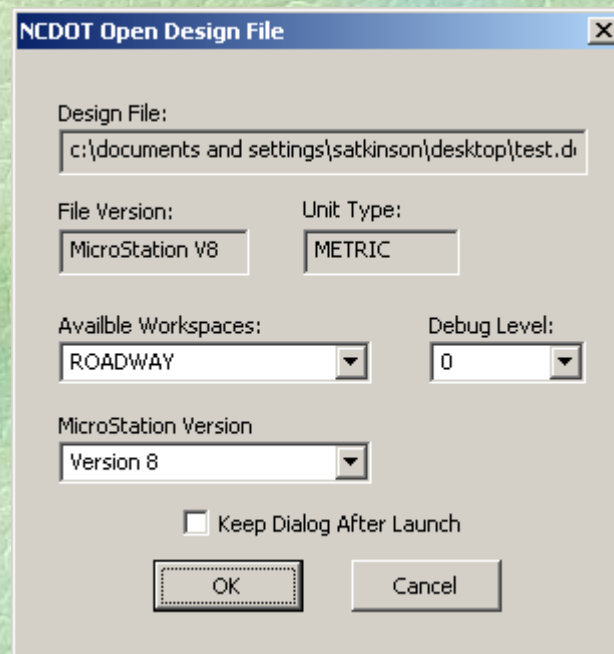
The Standard NCDOT Workspace

- Update Workspace program
- http://www.ncdot.org/IT/engineering_transportation_systems/CADD/workspaces
- C:\Program Files\Update Workspace



The Standard NCDOT Workspace

- MS_Start
- Automatically determine format, project, user, interface
- Double click file in Explorer



Customizing for Consultants

■ Variables for Update Workspace

- NCDOT_MSJ_CONFIG_DIR=(drive):\NCDOT_MSJ_CONFIG
- NCDOT_MSJ_WORKSPACE_DIR=(drive):\NCDOT_MSJ_WORKSPACE
- NCDOT_V8_CONFIG_DIR=(drive):\NCDOT_V8_CONFIG
- NCDOT_V8_WORKSPACE_DIR=(drive):\NCDOT_V8_WORKSPACE

- Can also use UNC for drive
 - \\trf-4467\workspace\ncdot_msj_workspace

This does not automatically load the NCDOT workspace

Customizing for Consultants

■ Desktop Shortcuts

- To use the NCDOT workspace
 - "C:\Program Files\Bentley\Program\MicroStation\ustation.exe"
-wcU:\consultant_stds\consultant_mslocal.cfg
- To disable NCDOT workspace if autoloaded
 - "C:\Program Files\Bentley\Program\MicroStation\ustation.exe"
-wsMS_DELIVERED_WRKSPC=True

Customizing for Consultants

- Consultant_Mslocal.cfg
 - Allows setting variables in configuration file instead of in registry
 - Can override system variables
 - Can be customized further
 - Can be used when required

Customizing for Consultants

- CONSULTANT_MSLOCAL.CFG

```
SERVER=d:/workspaces
```

```
#SERVER = \\trf-3465\workspaces
```

```
%if defined (SERVER)
```

```
NCDOT_MSJ_CONFIG_DIR=$(SERVER)\NCDOT_MSJ_CONFIG
```

```
NCDOT_MSJ_WORKSPACE_DIR=$(SERVER)\NCDOT_MSJ_WORKSPACE
```

```
NCDOT_V8_CONFIG_DIR=$(SERVER)\NCDOT_V8_CONFIG
```

```
NCDOT_V8_WORKSPACE_DIR=$(SERVER)\NCDOT_V8_WORKSPACE
```

```
%endif
```

```
#MS_DELIVERED_WRKSPC = True
```

Supplemental Workspace

- Store modifications outside of the NCDOT workspace
- Use variables to point to supplemental utilities
- Not affected by changes to NCDOT workspaces

- Download document from NCDOT website
http://www.ncdot.org/IT/engineering_transportation_systems/CADD/workspaces
- Set system environment variable
`SUPPLEMENTAL_STDS = c:\ncdot_v8_workspace\anyeng_stds`
- Use update workspace program to download template_stds
- Populate supplemental folders as needed
- Add variables to supplementalcfg.dat

Supplemental Workspace

- SupplementalCfg.dat
 - `##if defined (_VERSION70)`
 - `# MS_CELL > c:/ncdot_msj_workspace/roadside_stds/english/cell/`
 - `# MS_CELLLIST > c:/ncdot_msj_workspace/roadside_stds/english/cell/*.cel`
 - `##endif`
 - `%if defined (_VERSION80)`
 - `# MS_CELL > c:/ncdot_v8_workspace/roadside_stds/english/cell/`
 - `# MS_CELLLIST > c:/ncdot_v8_workspace/roadside_stds/english/cell/*.cel`
 - `##endif`