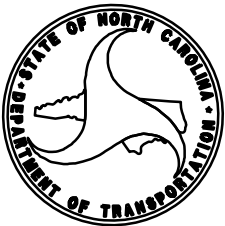
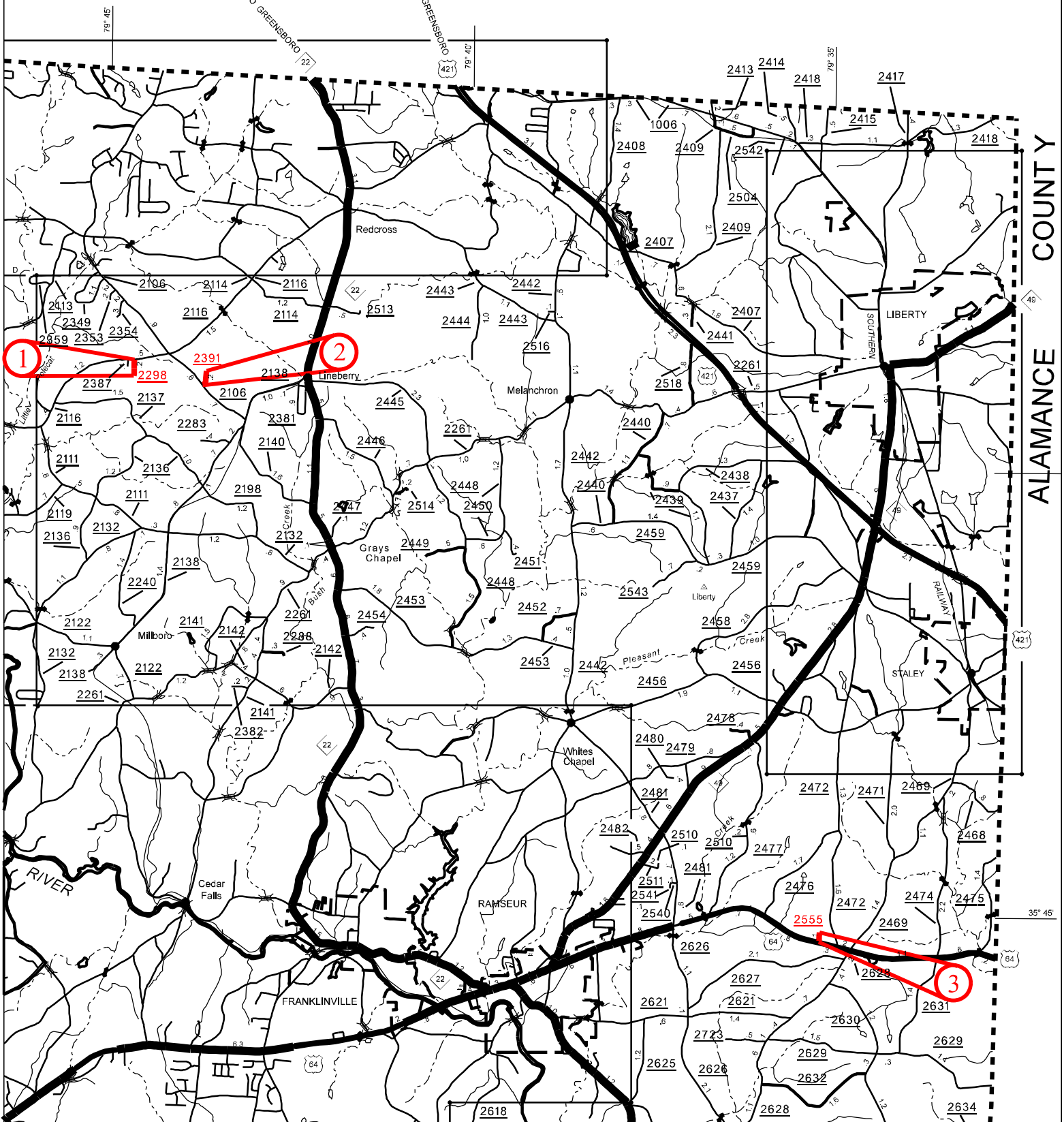


GUILFORD COUNTY

ALAMANCE COUNTY

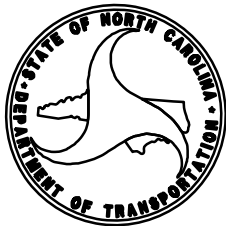
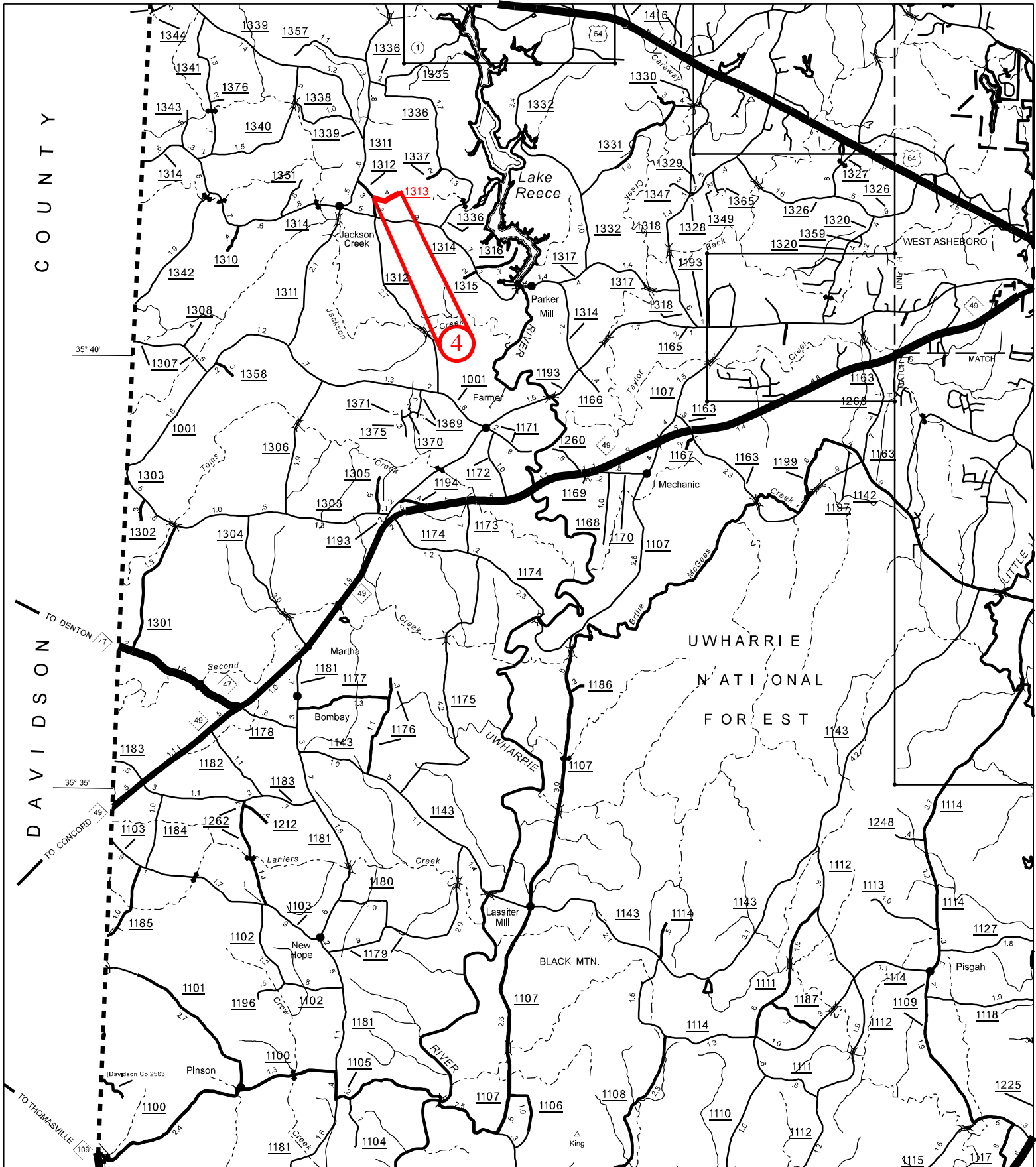


Prepared In the Office of:
DIVISION OF HIGHWAYS
DIVISION 8 - DISTRICT 1
300 DOT DR.
ASHEBORO NC 27205
PHONE NO. (336)318-4007

REUBEN BLAKLEY P.E.
 DISTRICT ENGINEER

PLANS DATE: 9/1/2011

VICINITY MAP
SR 2298, SR 2391,
& SR 2555
RANDOLPH COUNTY
BASE & PAVE
 NOT TO SCALE



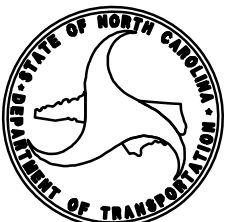
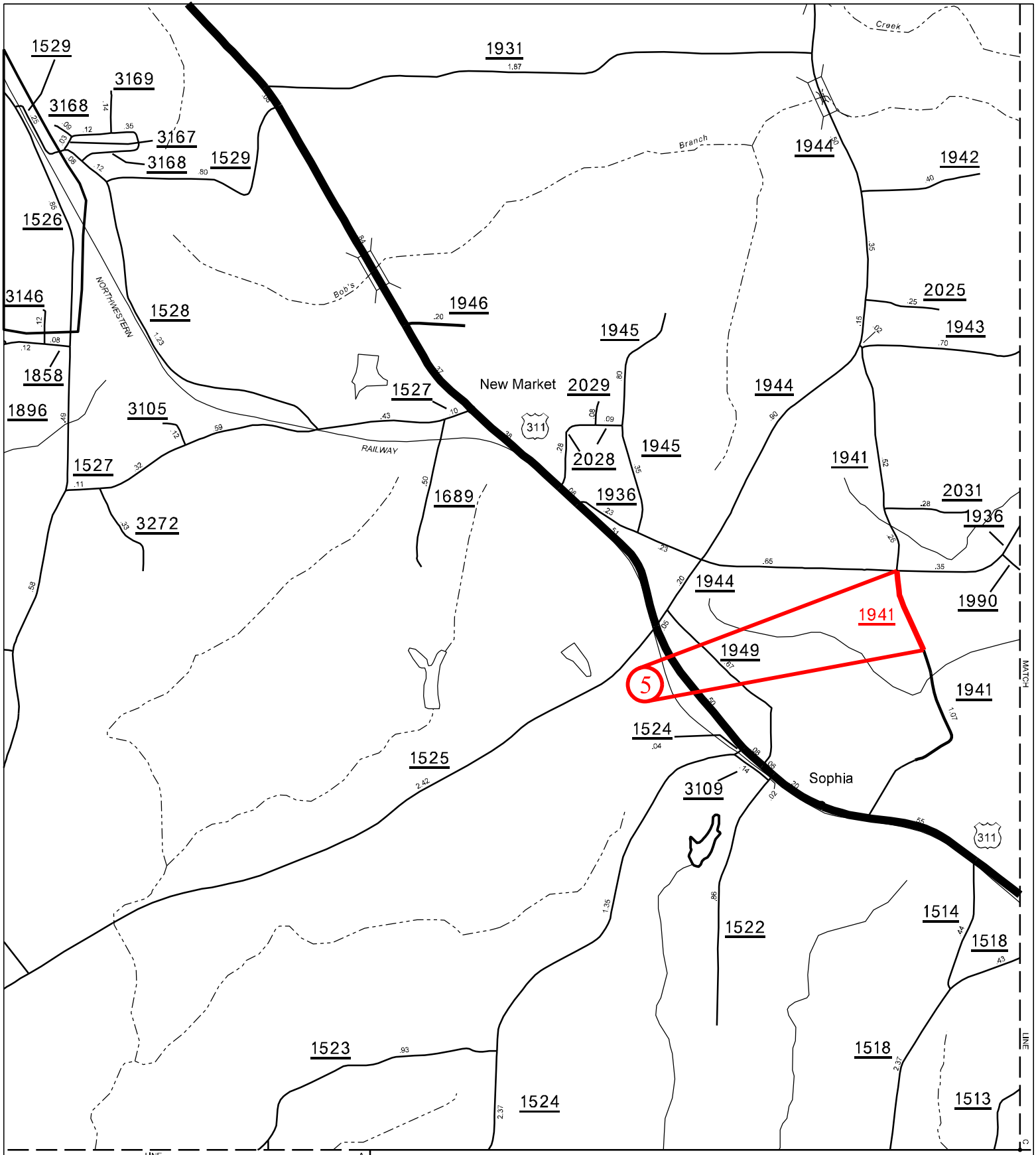
Prepared In the Office of:
DIVISION OF HIGHWAYS
DIVISION 8 - DISTRICT 1
300 DOT DR.
ASHEBORO NC 27205
PHONE NO. (336)318-4007

REUBEN BLAKLEY P.E.
 DISTRICT ENGINEER

PLANS DATE: 9/1/2011

VICINITY MAP
SR 1313
RANDOLPH COUNTY
BASE & PAVE

NOT TO SCALE



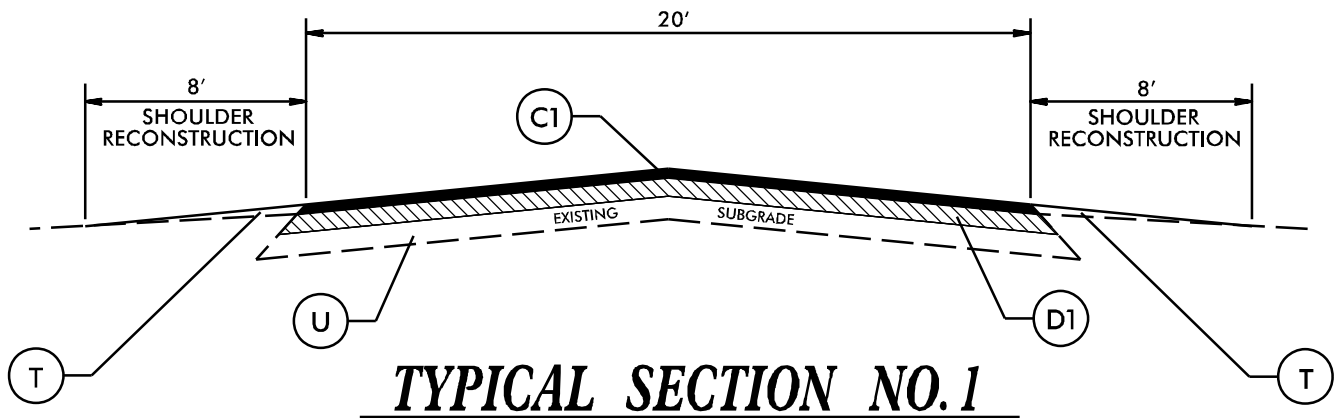
Prepared in the Office of:
DIVISION OF HIGHWAYS
DIVISION 8 - DISTRICT 1
300 DOT DR.
ASHEBORO NC 27205
PHONE NO. (336)318-4007

REUBEN BLAKLEY P.E.
 DISTRICT ENGINEER

PLANS DATE: 9/1/2011

VICINITY MAP
SR 1941
RANDOLPH COUNTY
BASE & PAVE

NOT TO SCALE



RANDOLPH COUNTY

SR 2298

SR 2391

SR 2555

SR 1313

SR 1941

PAVEMENT SCHEDULE	
C1	PROP. APPROX. 2" ASPHALT CONCRETE SURFACE COURSE, TYPE S9.5B, AT AN AVERAGE RATE OF 224 LBS. PER SQ. YD.
D1	PROP. APPROX. 4" ASPHALT CONCRETE BINDER COURSE, TYPE I19.0B, AT AN AVERAGE RATE OF 456 LBS. PER SQ. YD.
T	EARTH MATERIAL.
U	EXISTING SUBGRADE.

PROJECT NO.	SHEET NO.	TOTAL NO.
8C.076134, 8C.076135 8C.076136, ETC.	5	5

SUMMARY OF QUANTITIES

PROJECT NO	COUNTY	MAP NO	ROUTE	DESCRIPTION	TYP NO	FINAL SURFACE TESTING REQUIRED	LENGTH MI	WIDTH FT	FINE GRADING LS	INCIDENTAL STONE BASE TONS	SHOULDER RECONSTRUCTION SMI	INTERMEDIATE COURSE, 119.0B TONS	SURFACE COURSE, S9.5B TONS	ASPHALT BINDER FOR PLANT MIX TONS	SEED & MULCHING AC	SEED FOR REPAIR SEEDING LB	FERTILIZER FOR REPAIR SEEDING TON
8C.076134	Randolph	1	SR 2298	FROM PAVEMENT JOINT TO END OF MAINTENANCE	1	NO	0.09	20	0.09	10	0.18	257	125	19	0.14	50	0.25
TOTAL FOR MAP NO. 1							0.09			10	0.18	257	125	19	0.14	50	0.25
TOTAL FOR PROJ NO. 8C.076134							0.09		0.09	10	0.18	257	125	19	0.14	50	0.25
8C.076135	Randolph	2	SR 2391	FROM SR 2106 TO END OF MAINTENANCE	1	NO	0.19	20	0.18	20	0.38	543	264	40	0.29	50	0.25
TOTAL FOR MAP NO. 2							0.19			20	0.38	543	264	40	0.29	50	0.25
TOTAL FOR PROJ NO. 8C.076135							0.19		0.18	20	0.38	543	264	40	0.29	50	0.25
8C.076136	Randolph	3	SR 2555	FROM US 64 TO END OF MAINTENANCE	1	NO	0.12	20	0.11	20	0.24	343	167	25	0.18	50	0.25
TOTAL FOR MAP NO. 3							0.12			20	0.24	343	167	25	0.18	50	0.25
TOTAL FOR PROJ NO. 8C.076136							0.12		0.11	20	0.24	343	167	25	0.18	50	0.25
8C.076141	Randolph	4	SR 1313	FROM SR 1312 TO END OF MAINTENANCE	1	NO	0.4	20	0.37	40	0.80	1,142	557	84	0.60	50	0.25
TOTAL FOR MAP NO. 4							0.4			40	0.80	1,142	557	84	0.60	50	0.25
TOTAL FOR PROJ NO. 8C.076141							0.4		0.37	40	0.80	1,142	557	84	0.60	50	0.25
8C.076144	Randolph	5	SR 1941	FROM 1936 FOR A DISTANCE OF 0.27MI	1	NO	0.27	20	0.25	20	0.54	771	376	56	0.41	50	0.25
TOTAL FOR MAP NO. 5							0.27			20	0.54	771	376	56	0.41	50	0.25
TOTAL FOR PROJ NO. 8C.076144							0.27		0.25	20	0.54	771	376	56	0.41	50	0.25
GRAND TOTAL							1.07		1.00	110	2.14	3,056	1,489	224	1.62	250	1.25