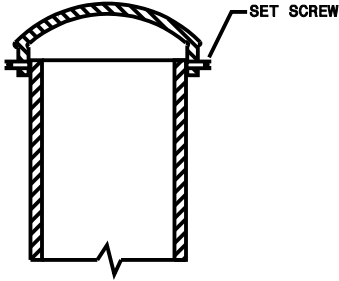
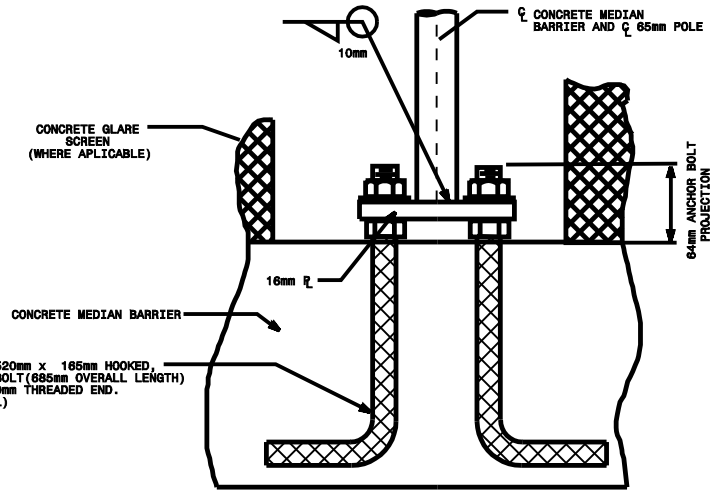


METRIC STANDARD DRAWING FOR
**MEDIAN BARRIER SIGN SUPPORT
AND ANCHORAGE**

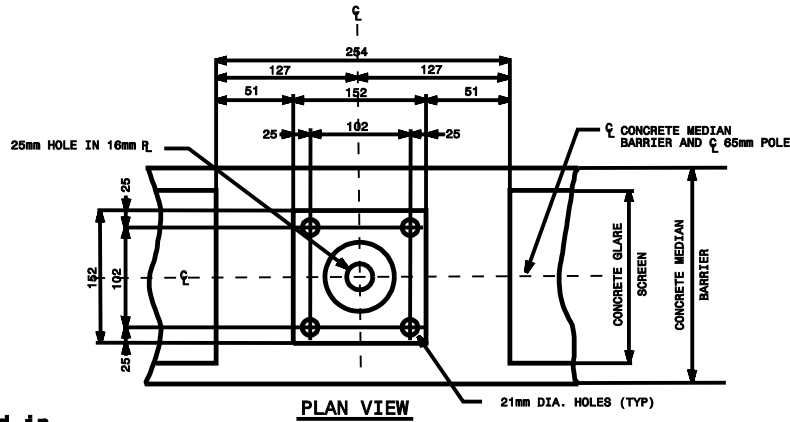


DETAIL "A"

FURNISH ALL TUBE OR PIPE SUPPORTS WITH A CAP. USE EITHER GALVANIZED STEEL OR A CAST ALUMINUM CAP TO MATCH THE MATERIAL OF THE POLE. USE FOUR SET SCREWS FOR ATTACHMENT TO SUPPORT.



**DETAIL "B"
WITH ANCHOR BOLT DETAIL**



PLAN VIEW

Note:
This drawing is dimensioned in millimeters unless otherwise depicted within the drawing.

METRIC STANDARD DRAWING FOR
**MEDIAN BARRIER SIGN SUPPORT
AND ANCHORAGE**