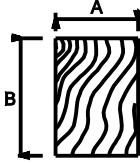
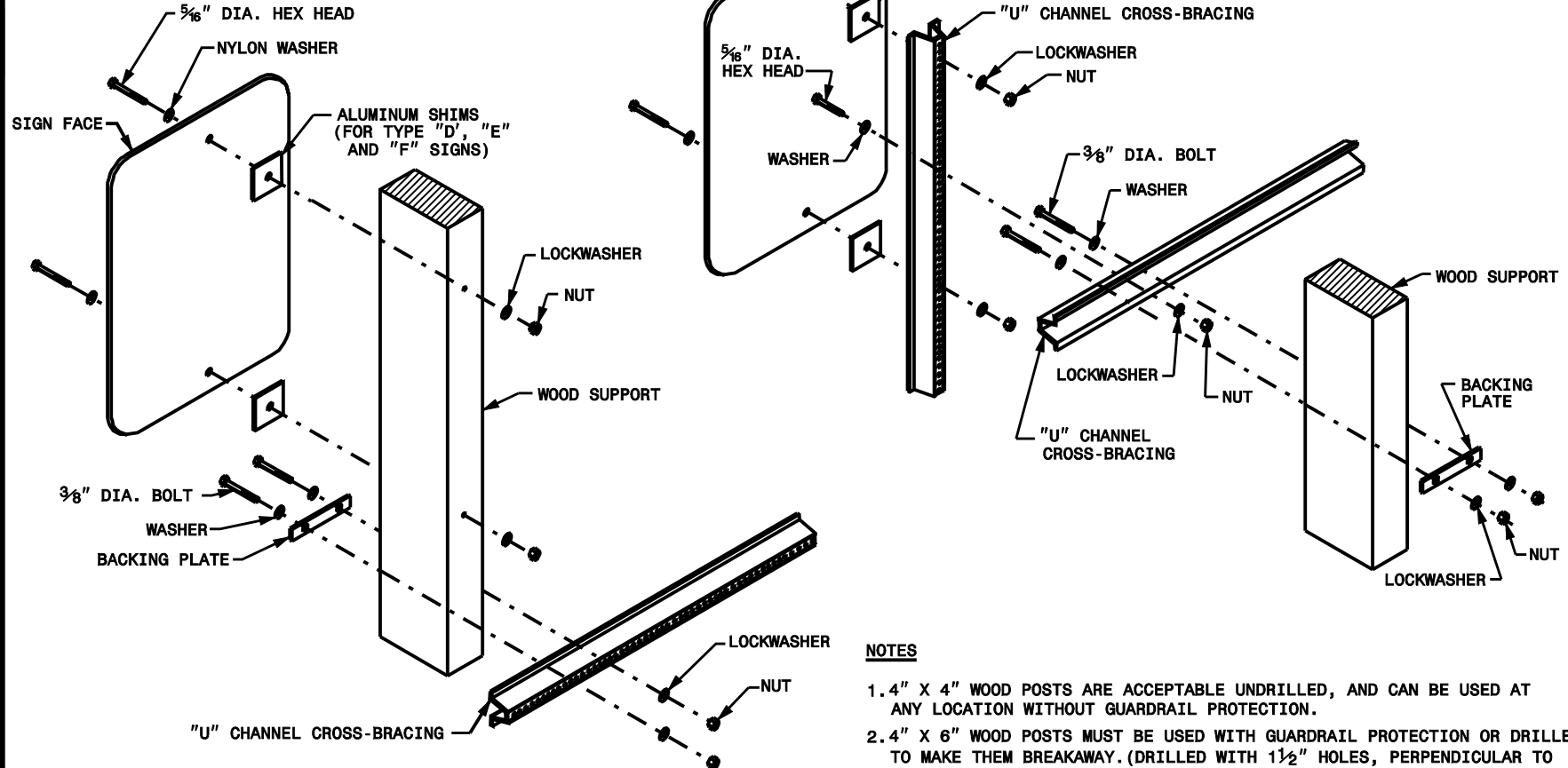
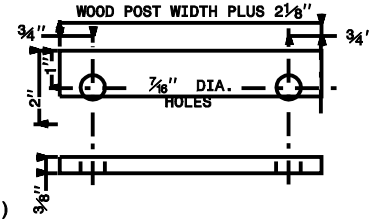


ATTACHMENT METHODS

POST SIZE AND DRILLED HOLE SIZE



A	B	HOLE SIZE	EMBEDMENT
4.0"	4.0"	N/A	3.5 FT.
4.0"	6.0"	1.5"	4.5 FT.



NOTES

1. 4" X 4" WOOD POSTS ARE ACCEPTABLE UNDRILLED, AND CAN BE USED AT ANY LOCATION WITHOUT GUARDRAIL PROTECTION.
2. 4" X 6" WOOD POSTS MUST BE USED WITH GUARDRAIL PROTECTION OR DRILLED TO MAKE THEM BREAKAWAY. (DRILLED WITH 1 1/2" HOLES, PERPENDICULAR TO THE DIRECTION OF TRAVEL, LOCATED 4" AND 18" ABOVE THE GROUND)
3. USE "U" CHANNEL POSTS FOR CROSS-BRACING SIGNS SUPPORTED BY DUAL WOOD POSTS.

STATE OF NORTH CAROLINA
DEPT. OF TRANSPORTATION
DIVISION OF HIGHWAYS
RALEIGH, N.C.

7-07
ENGLISH STANDARD DRAWING FOR
MOUNTING OF TYPE 'D', 'E', AND 'F'
SIGNS ON WOOD POSTS

SHEET 2 OF 2
903.20

STATE OF NORTH CAROLINA
DEPT. OF TRANSPORTATION
DIVISION OF HIGHWAYS
RALEIGH, N.C.

7-07
ENGLISH STANDARD DRAWING FOR
MOUNTING OF TYPE 'D', 'E', AND 'F'
SIGNS ON WOOD POSTS

SHEET 2 OF 2
903.20