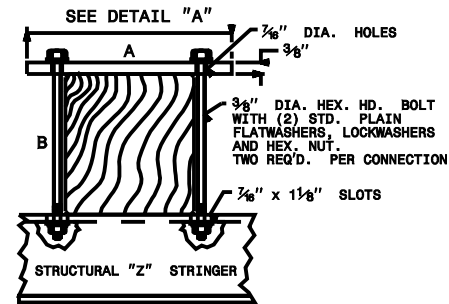
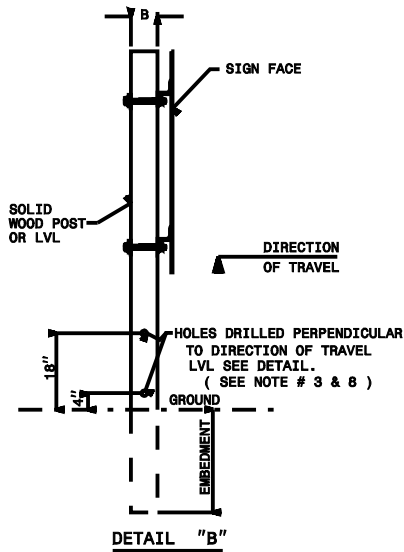
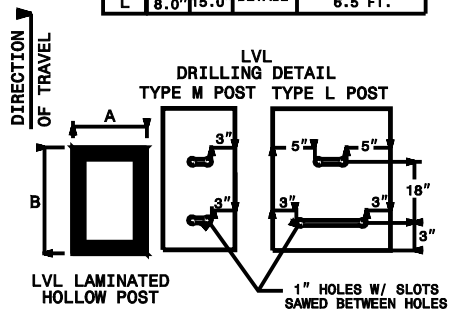
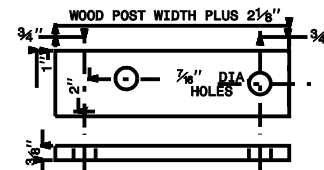


POST SIZE AND DRILLED HOLE SIZE

A		B		HOLE SIZE	EMBEDMENT
A	B	A	B		
4.0"	4.0"	N/A			3.5 FT.
4.0"	6.0"	1.5"			4.5 FT.
6.0"	6.0"	2.0"			5.25 FT.
6.0"	8.0"	3.0"			6.0 FT.
8.0"	8.0"	N/A			6.5 FT.
M	8.0"	8.0"		SEE DETAIL	6.5 FT.
L	8.0"	15.0"			6.5 FT.



WOOD SUPPORT MOUNTING DETAIL



NOTES:

- USE THE SIZE, NUMBER, LENGTH AND TYPE OF SUPPORTS SHOWN IN THE PLANS. USE WOOD POSTS THAT CONFORM TO SECTIONS 1082-2 AND 1082-3 OF THE 2002 NCDOT STANDARD SPECIFICATIONS FOR ROADS AND STRUCTURES.
- MOUNT ALL WOOD POSTS THAT DO NOT HAVE DRILLED HOLES BEHIND GUARDRAIL, EXCEPT THE 4" X 4" WOOD POSTS.
- FOR WOOD POSTS, DRILL THE BOTTOM HOLE 4" ABOVE THE GROUND AND THE TOP HOLE 18" ABOVE THE GROUND. SEE CHART FOR POST SIZES AND DRILLED HOLE SIZES. DRILL HOLES PERPENDICULAR TO THE DIRECTION OF TRAVEL. DUAL SUPPORTS MUST BE AT LEAST 7 FEET APART. (SEE DETAIL "B")
- LOCATE ALL WOOD POSTS THAT ARE 8" X 8" EITHER BEHIND GUARDRAIL OR LOCATED SO THAT THE POSTS COULD NOT BE HIT BY TRAFFIC.
- FURNISH ALL MOUNTING HARDWARE.
- USE GALVANIZED STEEL BACKING PLATES AND MOUNTING BOLTS.
- ADJUST STIFFENERS TO AVOID CONFLICTS WITH SUPPORTS.
- FOR LVL POSTS, DRILL THE BOTTOM HOLE 3" ABOVE THE GROUND AND THE TOP HOLE 18" ABOVE THE GROUND. SEE CHART FOR POST SIZES AND DRILLED HOLE SIZES. DRILL HOLES PERPENDICULAR TO THE DIRECTION OF TRAVEL. DUAL SUPPORTS MUST BE AT LEAST 7" APART. (SEE DETAIL "B")
- DRILL HOLES IN THE CENTER OF THE SUPPORTS