

Stanly County

Montgomery County

Pedestrian Map



Anson County

Comprehensive Transportation Plan

Plan date: August 16, 2010

Union County

Richmond County

South Carolina

Sidewalks

- Existing
- Needs Improvement
- Recommended

Off-road

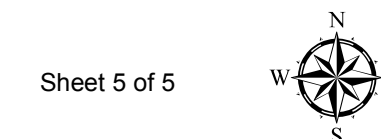
- Existing
- Needs Improvement
- Recommended

Multi-Use Paths

- Existing
- Needs Improvement
- Recommended

- Existing Grade Separation
- Proposed Grade Separation

0 0.4 0.9 1.8 2.7 Miles



Sheet 5 of 5

Base map date: February 15, 2010

Refer to CTP document for more details

