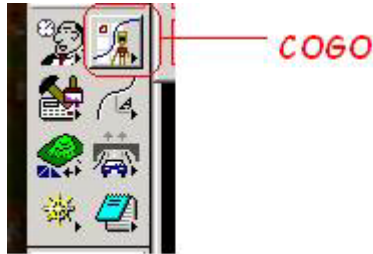


## Storing Ditches in a GPK file and Plotting Them Using D&C Manager

- In the GPK folder, copy the "jobrdy.gpk" and rename the copy to "jobhyd.gpk"
- Make a copy of Roadway's profile dgn file; e.g. "R 2303b\_rdy\_pfl.dgn". Paste it in Hydraulics\CADD directory. Rename it for Hydro, e.g. "R-2303b\_hyd\_pfl.dgn".
- The Profile naming convention should follow this format
  - Alignment\_Begin Station Left or Right Example: L\_1000Lt
- You have 2 ways to enter the ditches now.
  1. You can use *COGO*



- You will need to choose the jobhyd.gpk and put your initials in at operator code when you start *COGO*
- Enter: Store Profile L\_1000Lt
- Enter: VPI 1 Station 1000 Elevation 100
- Enter: VPI 2 Station 1200 Elevation 98
- Keep entering each VPI until you are done
- Enter: End Profile
- Then enter: Save profile L\_1000Lt

### 2. VPI Vertical Based Alignment Design Tool

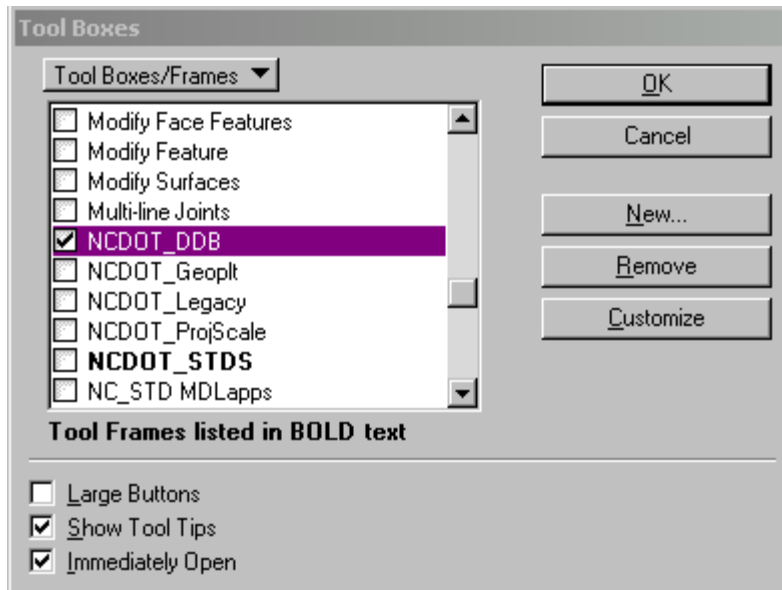


- Choose the HYD gpk
- Enter your initials for the "operator code"
- Choose your chain
- Click ok
- Enter the Station and Elevation
- Hit Insert and keep putting in Station/Elevation until you have entered your ditch profile.

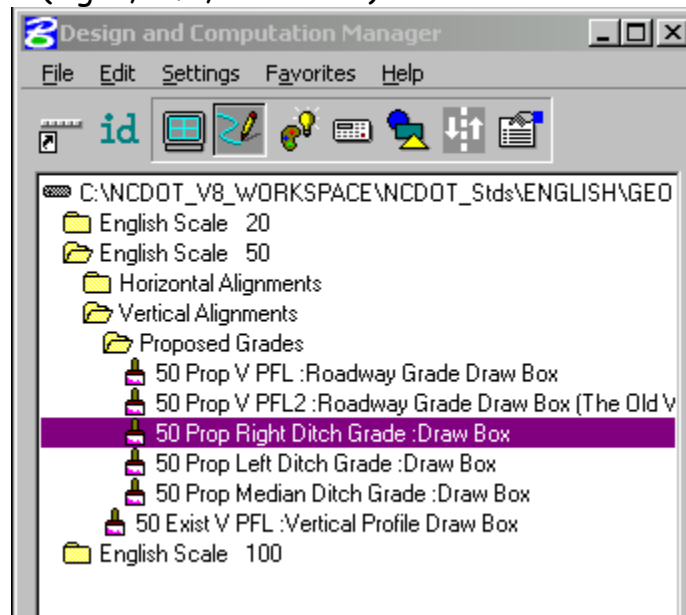
- Go File>Save Profile As... Follow profile naming convention

## PLOTTING PROFILES IN PFL.DGN

- Locate the correct toolbox.



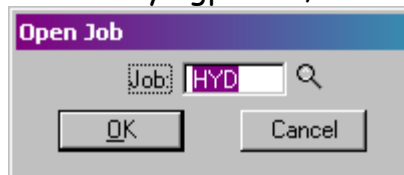
- Select the first toolbox.
  - Alignment D&C
- The following Design and Computation Manager box will appear.
- Select the correct Scale, Alignment, and Ditch location (right, left, or median).



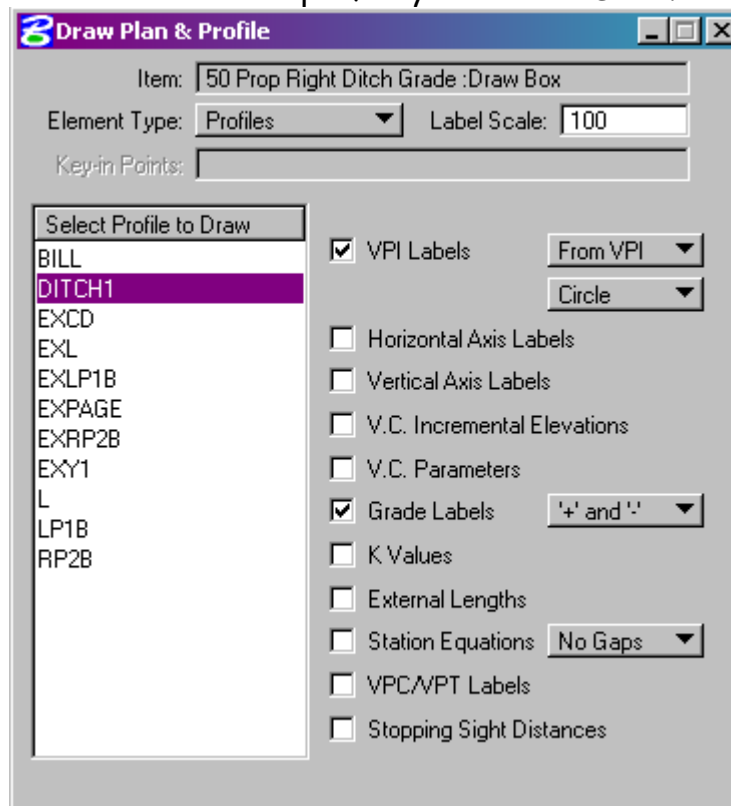
- In the smaller box labeled "50 Prop Right Ditch Grade:..." Click on Draw Plan & Profile



- Select the hyd.gpk file, click ok.



- The Draw Plan & Profile box appears. Select the correct profile you want to Draw.



- Once you select the profile you want to draw, another box opens up and contains information pertaining to the profile you selected.

**Profile - DITCH1**

Profile Range

Begin Station: 28+57.00

End Station: 31+00.00

Begin Elevation: 342.7000

End Elevation: 341.6000

Maximum Elevation: 342.7000

Minimum Elevation: 341.6000

Plot Settings

Horizontal Scale: 50

Vertical Scale: 10

Begin Station: 28+57.00

End Station: 31+00.00

Strip Grade Increment:

Profile Reference Point

Reference Station: 24+00

Reference Elevation: 320

X: 574076.5507

Y: -13164.3815

DP

Profile Cell

PGL Chain: RP2B

Draw Cell at XY

Identify Cell

OK

Cancel

- Fill in the correct information and click Ok. It is critical that you enter the Profile Reference Point Data correctly. (May use "Identify Cell" and click on profile grid in view window to populate settings.)

- This is what will appear on your profile.

